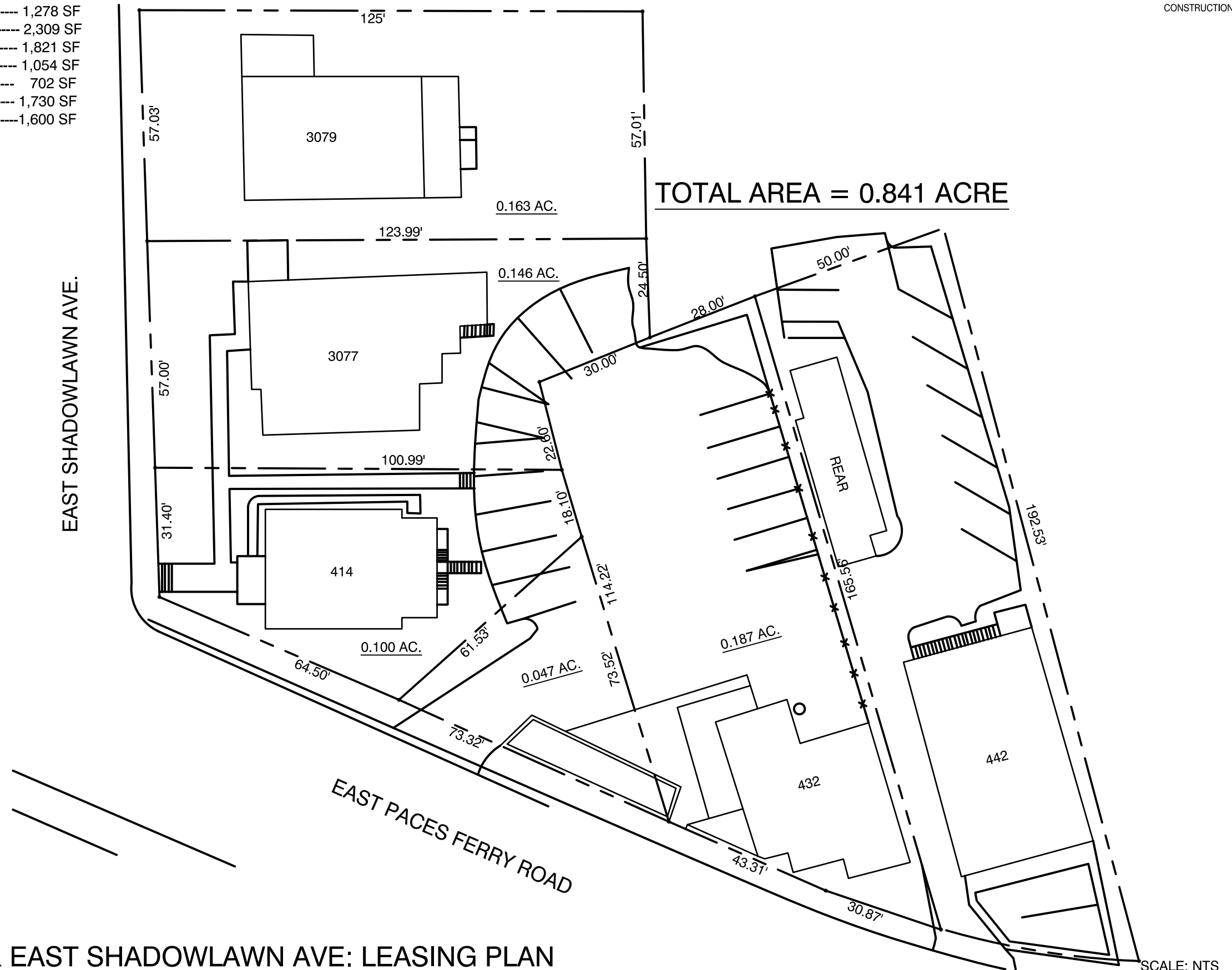


TENANT LIST

414 EAST PACES FERRY ROAD	NRS LLC.	1,278 SF
432 EAST PACES FERRY ROAD	POLLEN	2,309 SF
442 EAST PACES FERRY ROAD 1ST	HONEY NAIL SALON	1,821 SF
442 EAST PACES FERRY ROAD 2ND	CHARLES JOSEF	1,054 SF
442 EAST PACES FERRY ROAD REAR	VICTOR STRUMINGER	702 SF
3077 EAST SHADOWLAWN AVE	(AVAILABLE)	1,730 SF
3079 EAST SHADOWLAWN AVE	ALLIANCE TRAVEL	1,600 SF

WHILE SELIG ENTERPRISES, INC. BELIEVES THE INFORMATION CONTAINED WITHIN THIS DRAWING TO BE CORRECT, WE MAKE NO WARRANTY OR GUARANTEE AS TO ITS ACCURACY. IT IS RECOMMENDED THAT ALL INFORMATION BE FIELD VERIFIED PRIOR TO DESIGN AND/OR CONSTRUCTION.



EAST PACES FERRY ROAD & EAST SHADOWLAWN AVE: LEASING PLAN

414, 432 & 442 EAST PACES FERRY RD.
 3077 3079 EAST SHADOWLAWN AVE.
 ATLANTA, GA. 30305

DRAWN BY: D.ROBINSON

SCALE: NTS

DATE: 1/14/14



1100 SPRING STREET NW SUITE 550
 ATLANTA, GEORGIA 30309-2848
 TEL (404) 876-5511 FAX (404) 875-2629

USER: drobinson - Jan 14, 2014 - 10:58am
 S:\CONSTRUCTION\AutoCAD\As_Built Drawings\Retail\East Paces Ferry Rd\Site Plan\East Paces Ferry Rd & East Shadowlawn Overall.dwg