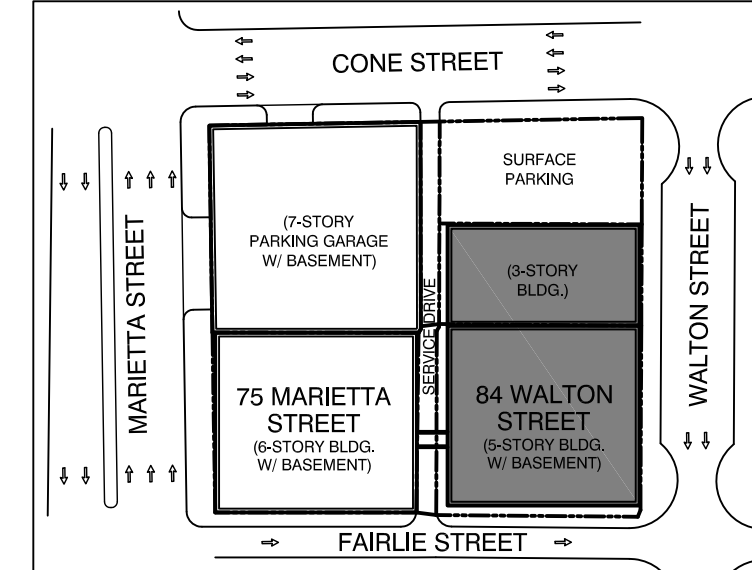
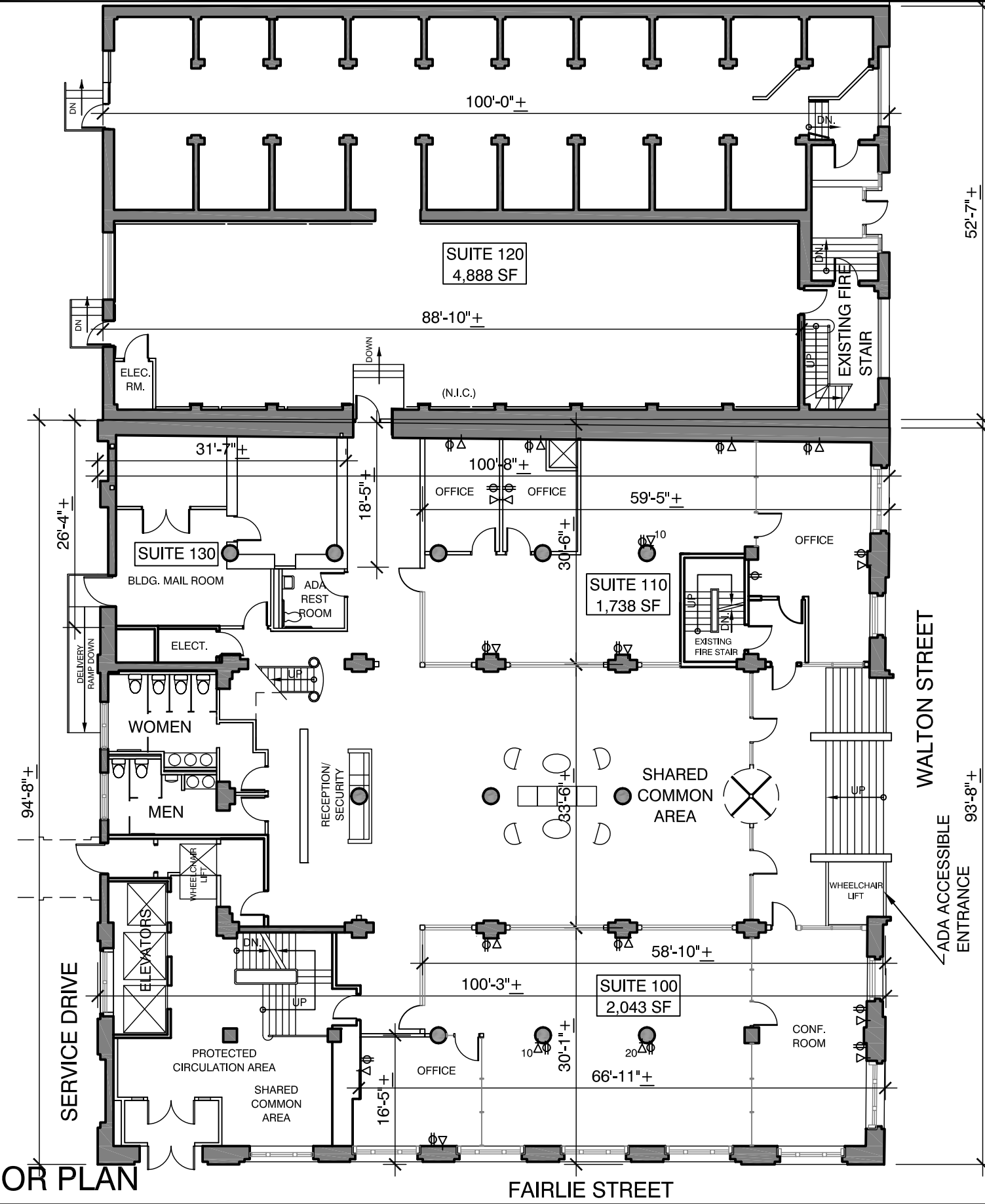


EXCEPT WITH RESPECT TO THE OBLIGATIONS OF LANDLORD WHICH ARE EXPRESSLY PROVIDED IN THE LEASE, LANDLORD HAS MADE NO AGREEMENT, REPRESENTATION OR WARRANTY WITH RESPECT TO THE STATUS OR EXISTENCE OF ANY LEASE, OCCUPANCY OR USAGE OF ANY SPACE, OR THE EXISTENCE, DESIGN OR LOCATION OF ANY BUILDINGS, IMPROVEMENTS, PARKING AREAS, CURB CUTS, DRIVES OR OTHER COMMON AREAS WITH RESPECT TO THE SHOPPING CENTER OR ANY OUTPARCELS OR OTHER PROPERTY. LANDLORD BELIEVES THAT THE INFORMATION CONTAINED WITHIN THIS DRAWING IS PRESENTLY CORRECT, BUT LANDLORD MAKES NO WARRANTY, REPRESENTATION OR GUARANTEE AS TO ITS ACCURACY OR WHETHER IT WILL REMAIN AS CONFIGURED, AND LANDLORD RECOMMENDS THAT ALL INFORMATION BE FIELD VERIFIED PRIOR TO DESIGN AND CONSTRUCTION.



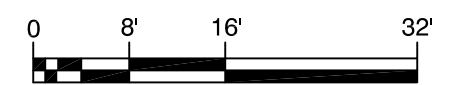
KEY PLAN SCALE: 1"=100'

NORTH

84 WALTON STREET - TROLLEY BARN:
SUITE 120 RENTABLE AREA CALCULATION:
 4,866 SF FLOOR USEABLE AREA
 + 22 SF OF FLOOR COMMON AREA
4,888 SF RENTABLE AREA

84 WALTON STREET:
SUITE 100 RENTABLE AREA CALCULATION:
 1,912 SF FLOOR USEABLE AREA
 + 131 SF OF FLOOR COMMON AREA
2,043 SF RENTABLE AREA

SUITE 110 RENTABLE AREA CALCULATION:
 1,626 SF FLOOR USEABLE AREA
 + 112 SF OF FLOOR COMMON AREA
1,738 SF RENTABLE AREA



SCALE: 1/16"=1'-0"

84 WALTON STREET - FIRST FLOOR PLAN

84 WALTON STREET
 ATLANTA, GA. 30303

DRAWN BY: CO DATE: 10/01/15

SELIG ENTERPRISES, INC.

1100 SPRING STREET NW SUITE 550
 ATLANTA, GEORGIA 30309-2848
 TEL (404) 876-5511 FAX (404) 875-2629

USER: csmell - Oct 01, 2015 - 1:45pm
 S:\CONSTRUCTION\AutoCAD\As_Built Drawings\OFFICE\75 Marietta Street\LOD\84 Walton - Floor Plans\84 Walton - Floor 1.dwg