

NEWLY RENOVATED

270

CARPENTER

Conveniently located at Roswell Road and I-285 with unparalleled access to I-285 and GA-400. Close proximity to banks, restaurants, hotels, post office, and convenient for commuting.

SUITE 120

EXCLUSIVELY MARKETED BY:

Jim Saine

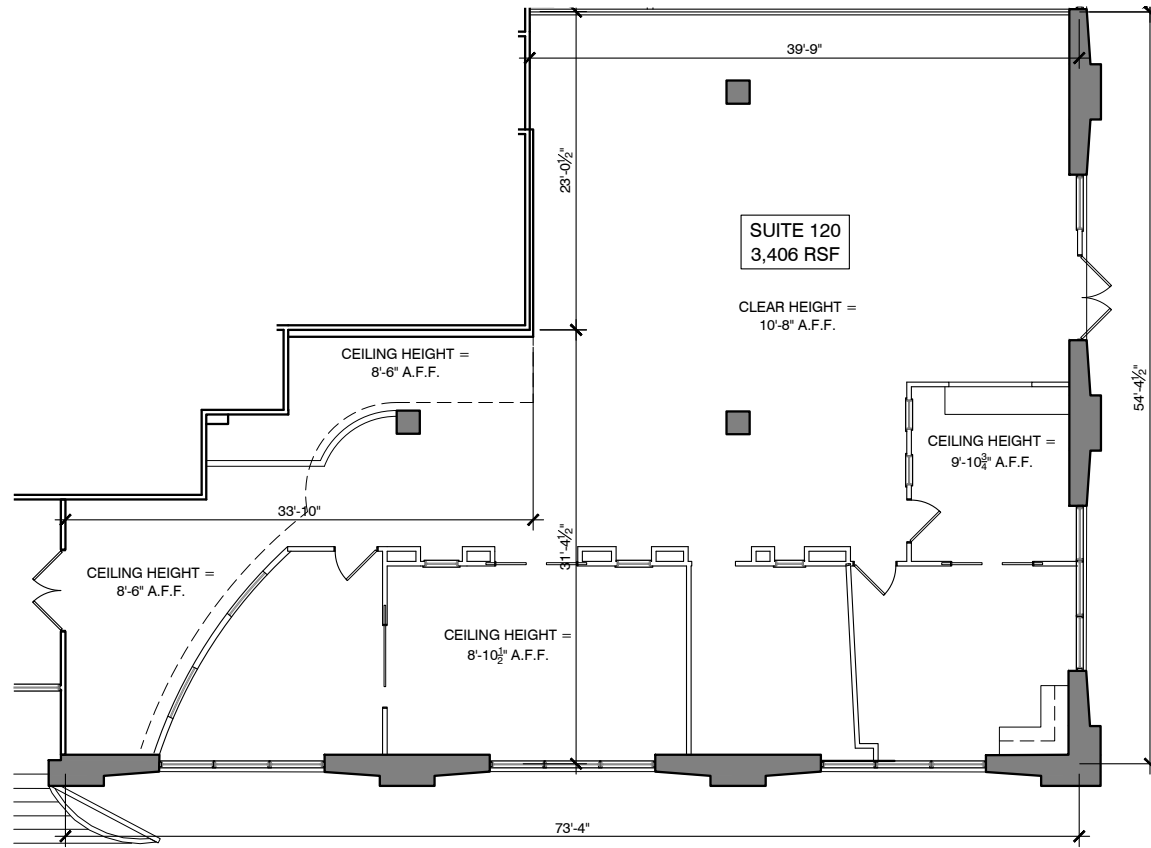
(404) 898 9010

jsaine@seligenterprises.com



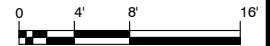
SUITE 120

EXCEPT WITH RESPECT TO THE OBLIGATIONS OF LANDLORD WHICH ARE EXPRESSLY PROVIDED IN THE LEASE, LANDLORD HAS MADE NO AGREEMENT, REPRESENTATION OR WARRANTY WITH RESPECT TO THE STATUS OR EXISTENCE OF ANY LEASE, OCCUPANCY OR USAGE OF ANY SPACE, OR THE SURFACE DESIGN OR LOCATION OF ANY BUILDINGS, IMPROVEMENTS, PARKING, MEDICAL EQUIPMENT, DRIVES OR OTHER COMMON AREAS WITH RESPECT TO THE SHOPPING CENTER OR ANY OUTPARCELS OR OTHER PROPERTY. LANDLORD BELIEVES THAT THE INFORMATION CONTAINED WITHIN THIS DRAWING IS PRESENTLY CORRECT, BUT LANDLORD MAKES NO WARRANTY, REPRESENTATION OR GUARANTEE AS TO ITS ACCURACY OR WHETHER IT WILL REMAIN AS CONFIGURED, AND LANDLORD RECOMMENDS THAT ALL INFORMATION BE FIELD VERIFIED PRIOR TO DESIGN AND CONSTRUCTION.



270 CARPENTER DRIVE: SUITE 120 FLOOR PLAN

270 CARPENTER DRIVE, SUITE 120
SANDY SPRINGS, GEORGIA 30328



SCALE: 1/8" = 1'-0"

DATE: 03/18/23

DRAWN BY: CO
SELIG
ENTERPRISES, INC.

1100 SPRING STREET NW SUITE 550
ATLANTA, GEORGIA 30309-2848
TEL (404) 576-5511 FAX (404) 575-2629

USER: rjones / JUN 18, 2023 / 1:22:58 PM
 PROJECT: 270 CARPENTER DRIVE / SUITE 120 FLOOR PLAN

