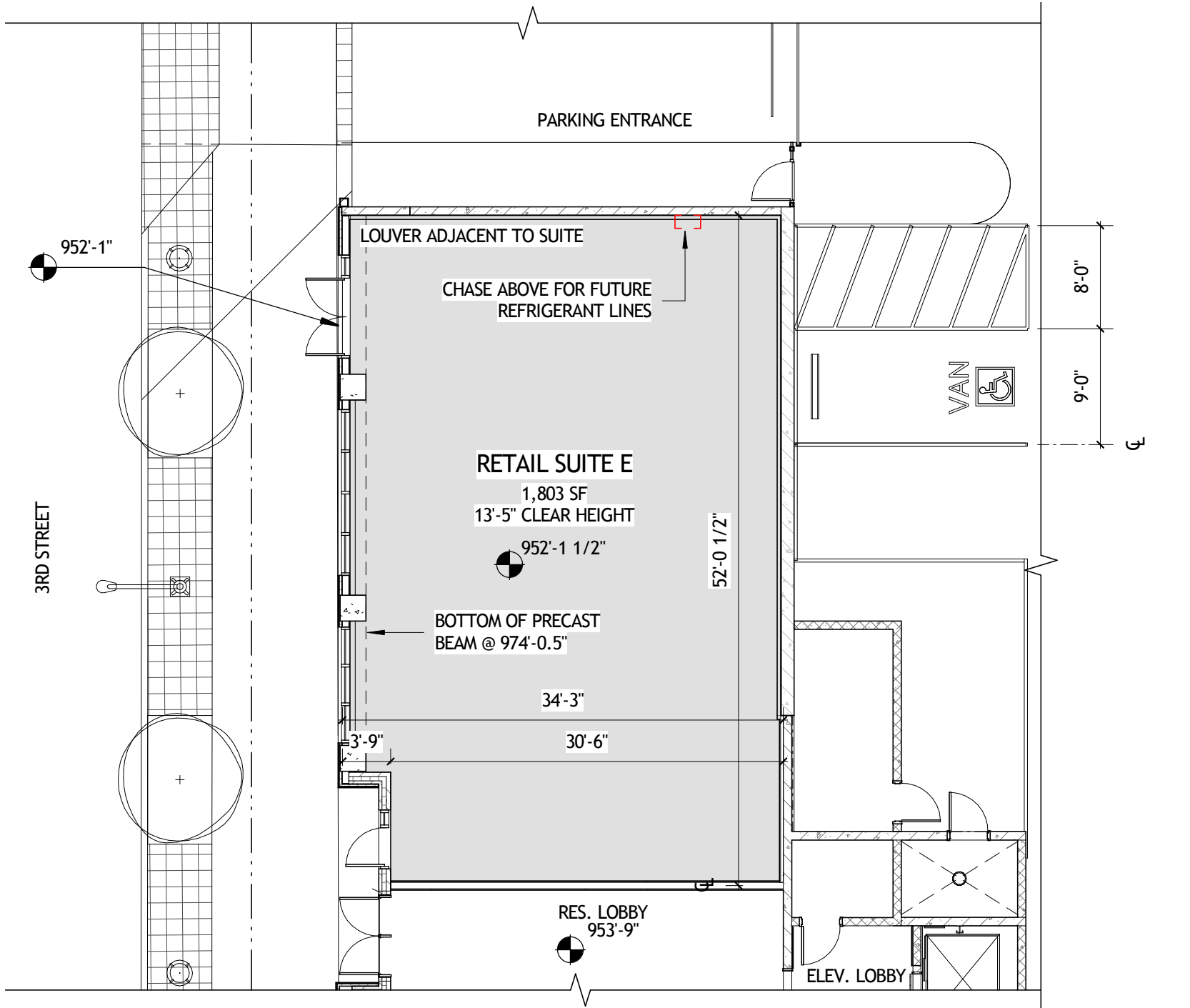


THE STANDARD @ ATLANTA

RETAIL SUITE E



HEIGHT: 13'-5" (TOP OF CONCRETE SLAB TO UNDERSIDE OF PRECAST DECKING ABOVE)

SUITE E AREA = 1,803 SF

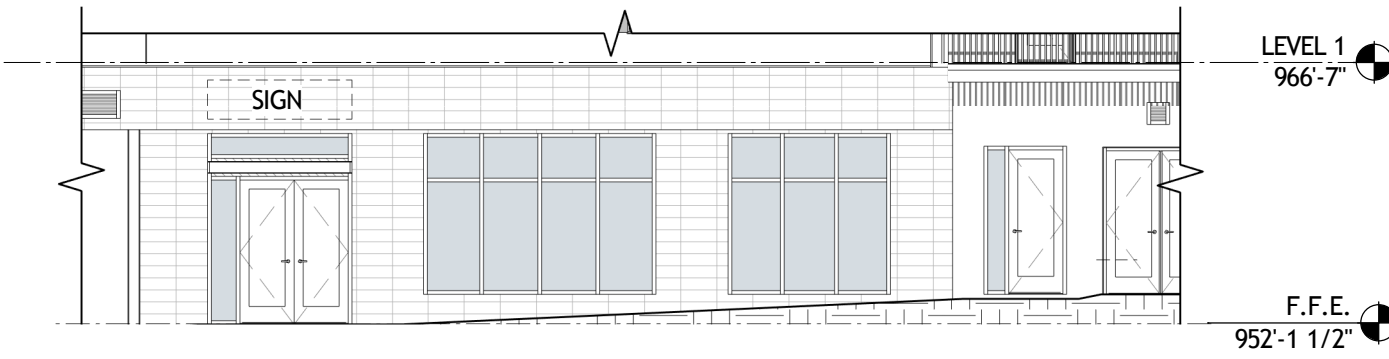
SUPPLEMENTAL ZONE = N/A

FINISH FLOOR = 952'-1.5"

RETAIL & VISITOR PARKING = 81 SPACES

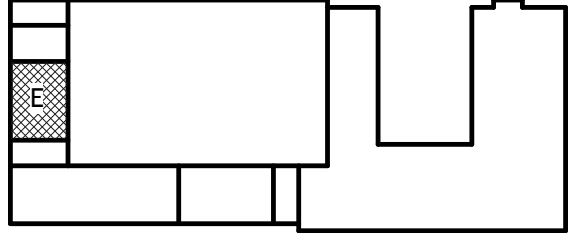
TOTAL RETAIL SF = +/- 7,656 SF

RETAIL & VISITOR PARKING ON LEVELS U1 AND U2



1 RETAIL SUITE E - LOD
R1.6 3/32" = 1'-0"

KEY PLAN:



R1.6