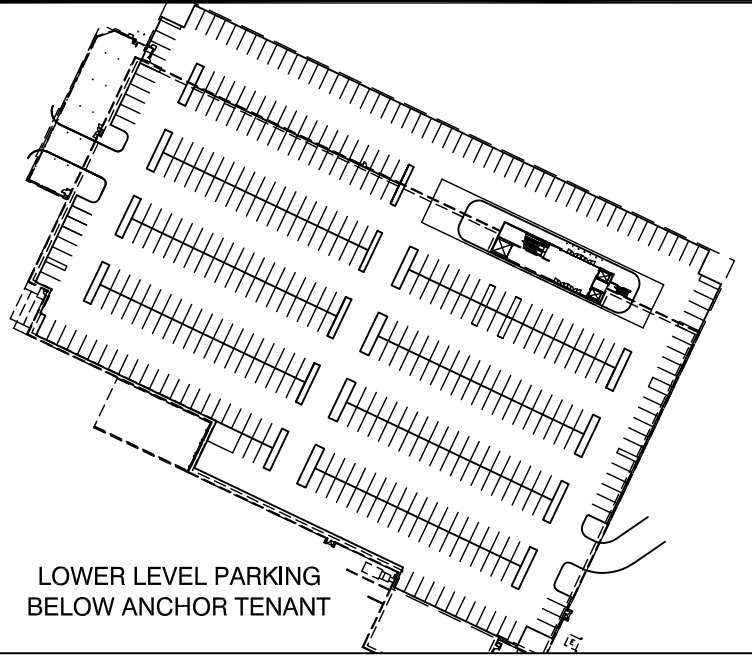


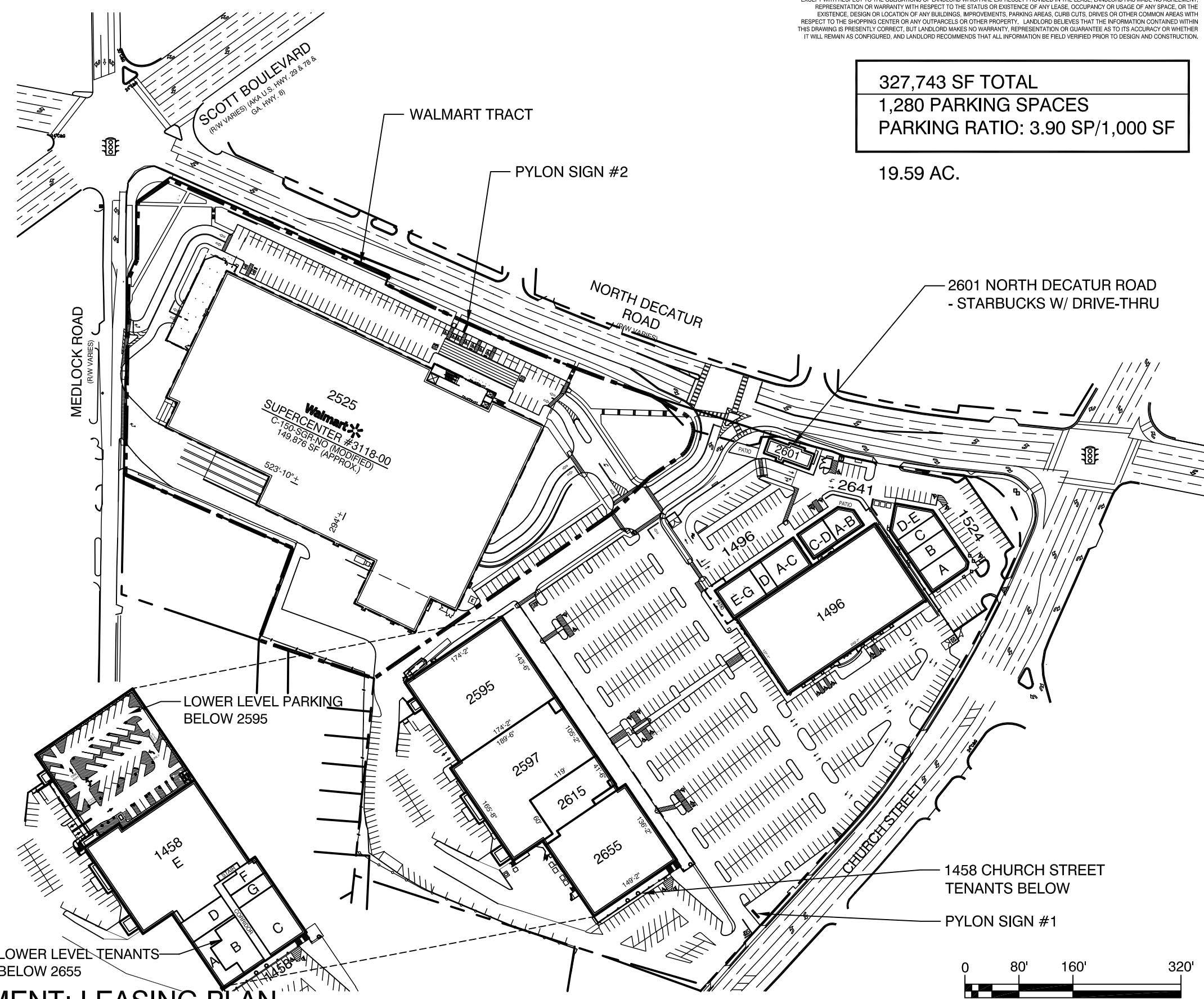
EXCEPT WITH RESPECT TO THE OBLIGATIONS OF LANDLORD WHICH ARE EXPRESSLY PROVIDED IN THE LEASE, LANDLORD HAS MADE NO AGREEMENT, REPRESENTATION OR WARRANTY WITH RESPECT TO THE STATUS OR EXISTENCE OF ANY LEASE, OCCUPANCY OR USAGE OF ANY SPACE, OR THE EXISTENCE, DESIGN OR LOCATION OF ANY BUILDINGS, IMPROVEMENTS, PARKING AREAS, CURB CUTS, DRIVES OR OTHER COMMON AREAS WITH RESPECT TO THE SHOPPING CENTER OR ANY OUTPARCELS OR OTHER PROPERTY. LANDLORD BELIEVES THAT THE INFORMATION CONTAINED WITHIN THIS DRAWING IS PRESENTLY CORRECT, BUT LANDLORD MAKES NO WARRANTY, REPRESENTATION OR GUARANTEE AS TO ITS ACCURACY OR WHETHER IT WILL REMAIN AS CONFIGURED, AND LANDLORD RECOMMENDS THAT ALL INFORMATION BE FIELD VERIFIED PRIOR TO DESIGN AND CONSTRUCTION.

**327,743 SF TOTAL**  
**1,280 PARKING SPACES**  
**PARKING RATIO: 3.90 SP/1,000 SF**

19.59 AC.



LOWER LEVEL PARKING BELOW ANCHOR TENANT



**TENANT LIST**

**NORTH DECATUR ROAD**

2525	WALMART	149,876 SF
2595	ROSS	25,328 SF
2597	HOMEGOODS	23,576 SF
2615	HALF PRICE BOOKS	6,913 SF
2655	JO-ANN	20,035 SF

**CHURCH STREET - LOWER LEVEL**

1458 - SUITE A	(AVAILABLE)	2,502 SF
1458 - SUITE B	DEKALB WOMEN'S SPECIALISTS	3,764 SF
1458 - SUITE C	A SMILE 4 U	5,395 SF
1458 - SUITE D	ELITE RADIOLOGY	2,539 SF
1458 - SUITE E	THE COMET PUB & LANES	29,503 SF
1458 - SUITE F	(AVAILABLE)	1,497 SF
1458 - SUITE G	KUMON EDUCATIONAL CENTERS	1,411 SF

**NORTH DECATUR ROAD**

2601	STARBUCKS	1,850 SF
2641 - SUITE A-B	TABI SUSHI	1,880 SF
2641 - SUITE C-D	ALLURE NAIL BAR	1,920 SF

**CHURCH STREET**

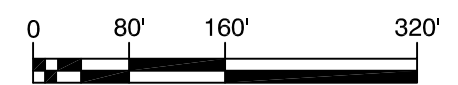
1496	LA FITNESS	34,214 SF
1496 - SUITE A-C	UNIFORM ADVANTAGE	3,038 SF
1496 - SUITE D	SPORT CLIPS	1,013 SF
1496 - SUITE E-G	LOUISIANA BISTREAUX	3,053 SF
1524 - SUITE A	MOE'S SOUTHWEST GRILL	2,455 SF
1524 - SUITE B	THE GEORGIA HEMP COMPANY	2,184 SF
1524 - SUITE C	PIZZA HUT	1,750 SF
1524 - SUITE D-E	AT&T	2,047 SF

LOWER LEVEL TENANTS BELOW 2655

LOWER LEVEL PARKING BELOW 2595

1458 CHURCH STREET TENANTS BELOW

PYLON SIGN #1



SCALE: 1"=160'

DRAWN BY: CO/KA DATE: 10/12/20



**SUBURBAN PLAZA REDEVELOPMENT: LEASING PLAN**

2525-2655 NORTH DECATUR ROAD  
 DECATUR, GA. 30033

1458-1524 CHURCH STREET  
 DECATUR, GA. 30030

**SELIG ENTERPRISES, INC.**  
 1100 SPRING STREET NW SUITE 550  
 ATLANTA, GEORGIA 30309-2848  
 TEL (404) 876-5511 FAX (404) 875-2629

USER: kacker - Oct 12, 2020 - 11:45am  
 S:\CONSTRUCTION\AutoCad\As Built Drawings\Retail\Suburban Plaza\Redevelopment\Suburban Plaza redevelopment CURRENT.dwg