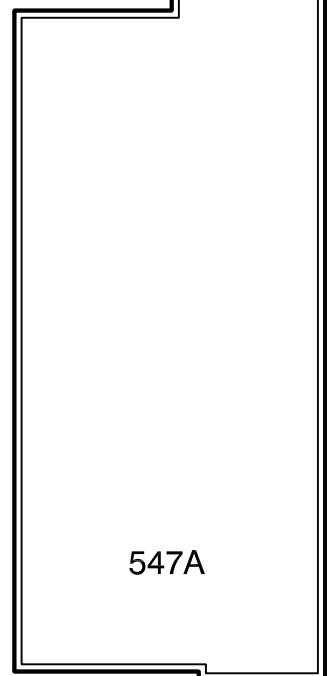
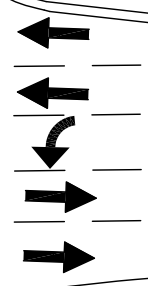
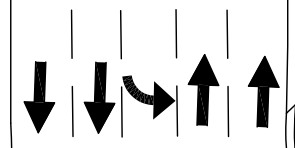


EXCEPT WITH RESPECT TO THE OBLIGATIONS OF LANDLORD WHICH ARE EXPRESSLY PROVIDED IN THE LEASE, LANDLORD HAS MADE NO AGREEMENT, REPRESENTATION OR WARRANTY WITH RESPECT TO THE STATUS OR EXISTENCE OF ANY LEASE, OCCUPANCY OR USAGE OF ANY SPACE, OR THE EXISTENCE, DESIGN OR LOCATION OF ANY BUILDINGS, IMPROVEMENTS, PARKING AREAS, CURB CUTS, DRIVES OR OTHER COMMON AREAS WITH RESPECT TO THE SHOPPING CENTER OR ANY OUTPARCELS OR OTHER PROPERTY. LANDLORD BELIEVES THAT THE INFORMATION CONTAINED WITHIN THIS DRAWING IS PRESENTLY CORRECT, BUT LANDLORD MAKES NO WARRANTY, REPRESENTATION OR GUARANTEE AS TO ITS ACCURACY OR WHETHER IT WILL REMAIN AS CONFIGURED, AND LANDLORD RECOMMENDS THAT ALL INFORMATION BE FIELD VERIFIED PRIOR TO DESIGN AND CONSTRUCTION.

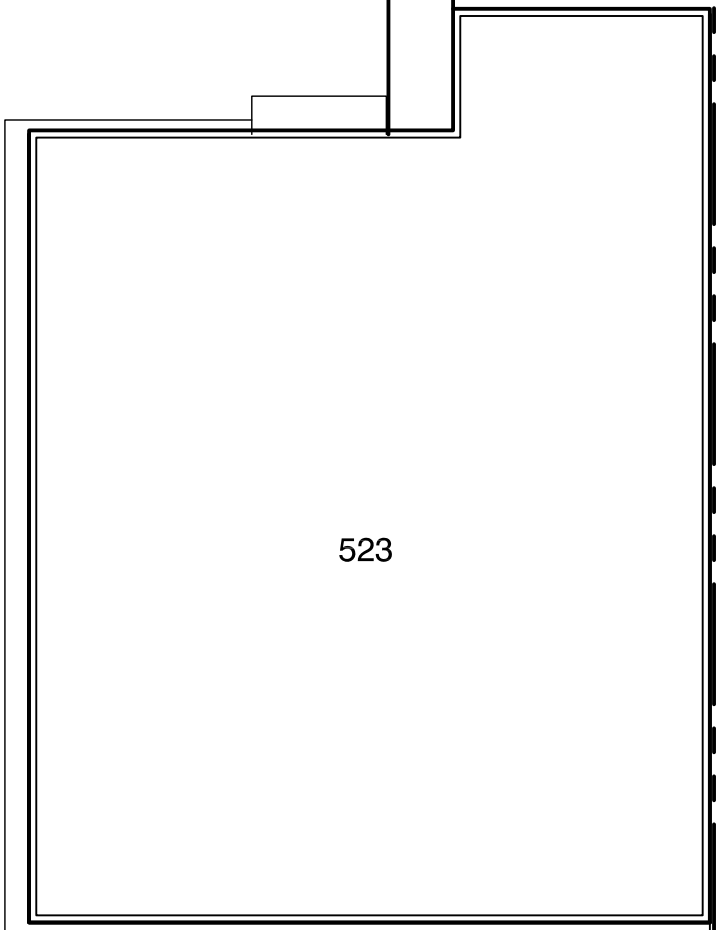
COMMERCE PLAZA - OWNED BY OTHERS

EXISTING MULTISTORY PARKING GARAGE - OWNED BY OTHERS

COMMERCE DRIVE

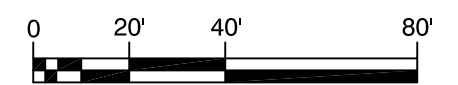


547A



523

CHURCH STREET



SCALE: 1" = 40'

DRAWN BY: CO

DATE: 01/27/17



NORTH

# 523-547 CHURCH STREET: LEASING PLAN

523-547 CHURCH STREET  
DECATUR, GEORGIA 30030



1100 SPRING STREET NW SUITE 550  
ATLANTA, GEORGIA 30309-2848  
TEL (404) 876-5511 FAX (404) 875-2629

USER: rconell - Jul 26, 2017 - 2:28pm  
S:\CONSTRUCTION\AutoCAD\As\_Built Drawings\Industrial\Church Street\Site Plan\CHURCH STREET\_523-547\_SITE.dwg