



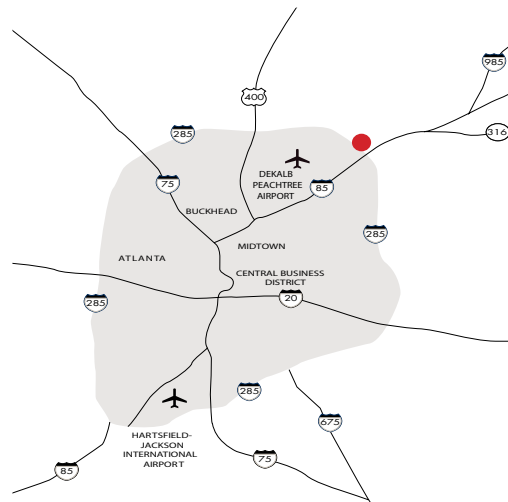
MARJAN DRIVE

3125 MARJAN DRIVE
DORAVILLE, GA 30340

19,500 SF

3125 Marjan Drive is a warehouse/distribution building located in Northeast Atlanta. Conveniently located at Atlanta's "Spaghetti Junction" in Northeast Atlanta at I-85 and I-285.

TOTAL SF	OFFICE SF	CLEAR HEIGHT	DOCK DOORS	ZONING	SPRINKLER	ELECTRICAL	ACCESSIBILITY	AVAILABLE
19,500	3,667	15'-6"	3 dh, 1 di	M-Ind	TBD	200a/240v/3ph	LOCK BOX	NOW



**EXCLUSIVELY
MARKETED BY:**

Kent Walker
(404) 898 9032

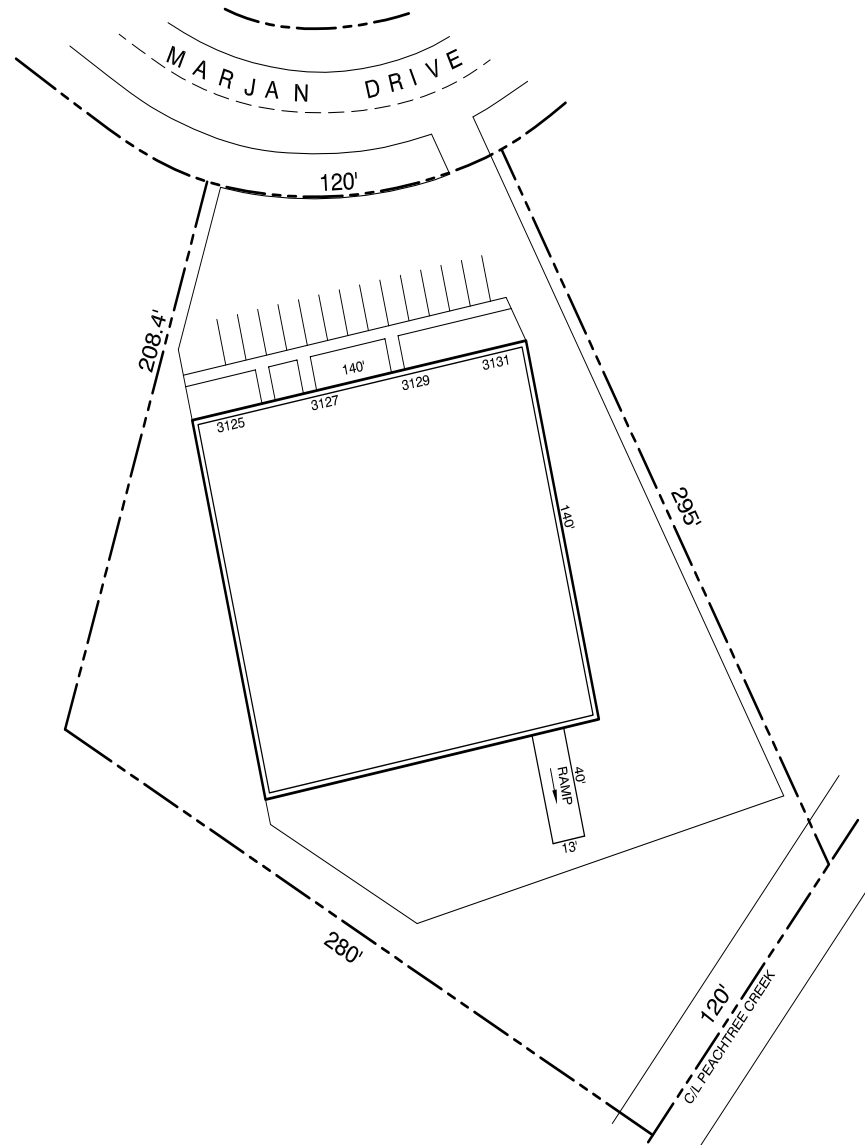
kwalker@seligenterprises.com



All measures, facts, and figures are subject to verification.

EXCEPT WITH RESPECT TO THE OBLIGATIONS OF LANDLORD WHICH ARE EXPRESSLY PROVIDED IN THE LEASE, LANDLORD HAS MADE NO AGREEMENT, REPRESENTATION OR WARRANTY WITH RESPECT TO THE STATUS OR EXISTENCE OF ANY LEASE, OCCUPANCY OR USAGE OF ANY SPACE, OR THE EXISTENCE, ORDER OR LOCATION OF ANY BUILDINGS, IMPROVEMENTS, PARKING AREAS, CURB CUTS, DRIVEWAYS OR OTHER COMMON AREAS WITH RESPECT TO THE SHOPPING CENTER OR ANY OUTPARCELS OR OTHER PROPERTY. LANDLORD BELIEVES THAT THE INFORMATION CONTAINED WITHIN THIS DRAWING IS PRESENTLY CORRECT, BUT LANDLORD MAKES NO WARRANTY, REPRESENTATION OR GUARANTEE AS TO ITS ACCURACY OR WHETHER IT WILL REMAIN AS CONFIGURED, AND LANDLORD RECOMMENDS THAT ALL INFORMATION BE FIELD VERIFIED PRIOR TO DESIGN AND CONSTRUCTION.

19,500 SF TOTAL
13 PARKING SPACES
PARKING RATIO: 0.66 SP/1,000 SF



SCALE: 1"=50'

DATE: 04/21/15

DRAWN BY: KA



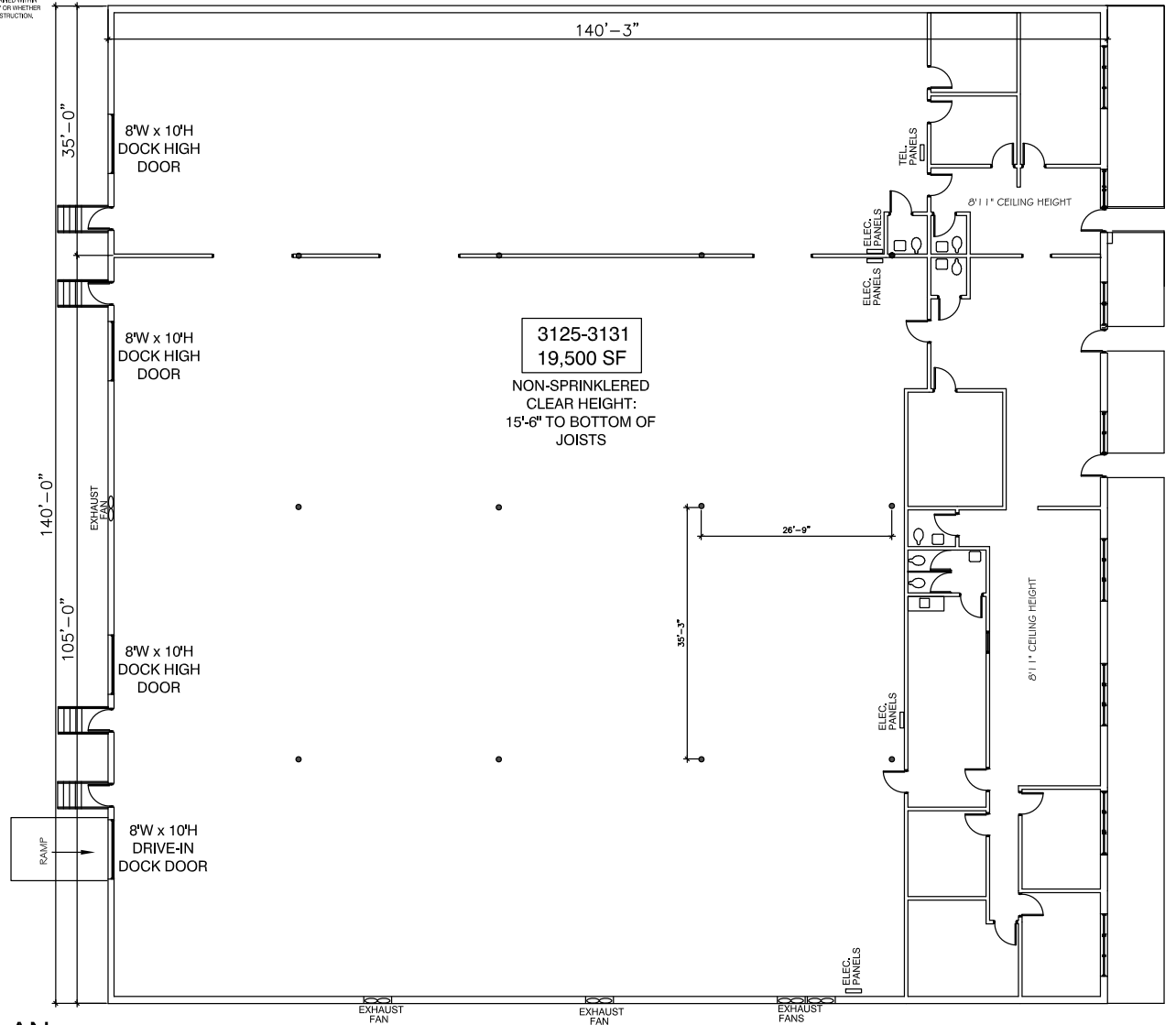
MARJAN DRIVE: SITE PLAN

3125-3131 MARJAN DRIVE
ATLANTA, GEORGIA 30340



1100 SPRING STREET NW SUITE 550
ATLANTA, GEORGIA 30309-2848
TEL (404) 876-5511 FAX (404) 875-2629

EXCEPT WITH RESPECT TO THE OBLIGATIONS OF LANDLORD WHICH ARE EXPRESSLY PROVIDED IN THE LEASE, LANDLORD HAS MADE NO AGREEMENT, REPRESENTATION OR WARRANTY WITH RESPECT TO THE STATUS OR EXISTENCE OF ANY LEASE, OCCUPANCY OR USAGE OF ANY SPACE, OR THE CONTENTS, DESIGN OR LOCATION OF ANY BUILDINGS, IMPROVEMENTS, PARKING AREAS, CURB CUTS, DRIVES OR OTHER COMMON AREAS WITH RESPECT TO THE SHOPPING CENTER OR ANY OUTPARCELS OR OTHER PROPERTY. LANDLORD BELIEVES THAT THE INFORMATION CONTAINED WITHIN THIS DRAWING IS PRESENTLY CORRECT, BUT LANDLORD MAKES NO WARRANTY, REPRESENTATION OR GUARANTEE AS TO ITS ACCURACY OR WHETHER IT WILL REMAIN AS CONFIGURED, AND LANDLORD RECOMMENDS THAT ALL INFORMATION BE FIELD VERIFIED PRIOR TO DESIGN AND CONSTRUCTION.



OFFICE SF 3,667 SF
TOTAL SF 19,500 SF

MARJAN DRIVE: FLOOR PLAN

3125-3131 MARJAN DRIVE
ATLANTA, GEORGIA 30340

SCALE: 3/32" = 1'-0"

DATE: 12/14/11

DRAWN BY: D.ROBINSON



1100 SPRING STREET NW SUITE 550
ATLANTA, GEORGIA 30309-2848
TEL (404) 876-5511 FAX (404) 875-2629

USER: Admin - 12/14/11 10:50:11 AM
 PROJECT: 3125-3131 MARJAN DRIVE
 DRAWING: 3125-3131 MARJAN DRIVE FLOOR PLAN

MARJAN DRIVE

3125 MARJAN DRIVE
DORAVILLE, GA 30340

