

# 75 MARIETTA STREET 84 WALTON PLACE

ATLANTA, GA 30303

Constructed in 1908, 75 Marietta/84 Walton was the original headquarters for the Georgia Railway and Power Company, the predecessor to Georgia Power. The building has an exciting history and not only provides tenants with a unique working experience, but with a central location to all that Downtown has to offer; the Fairlie Poplar district, Centennial Olympic Park, Georgia World Congress Center, MARTA access, parking, new streetcar and the Downtown Opportunity Zone.

OFFICE SUITES AVAILABLE  
Suite 502

EXCLUSIVELY MARKETING BY:

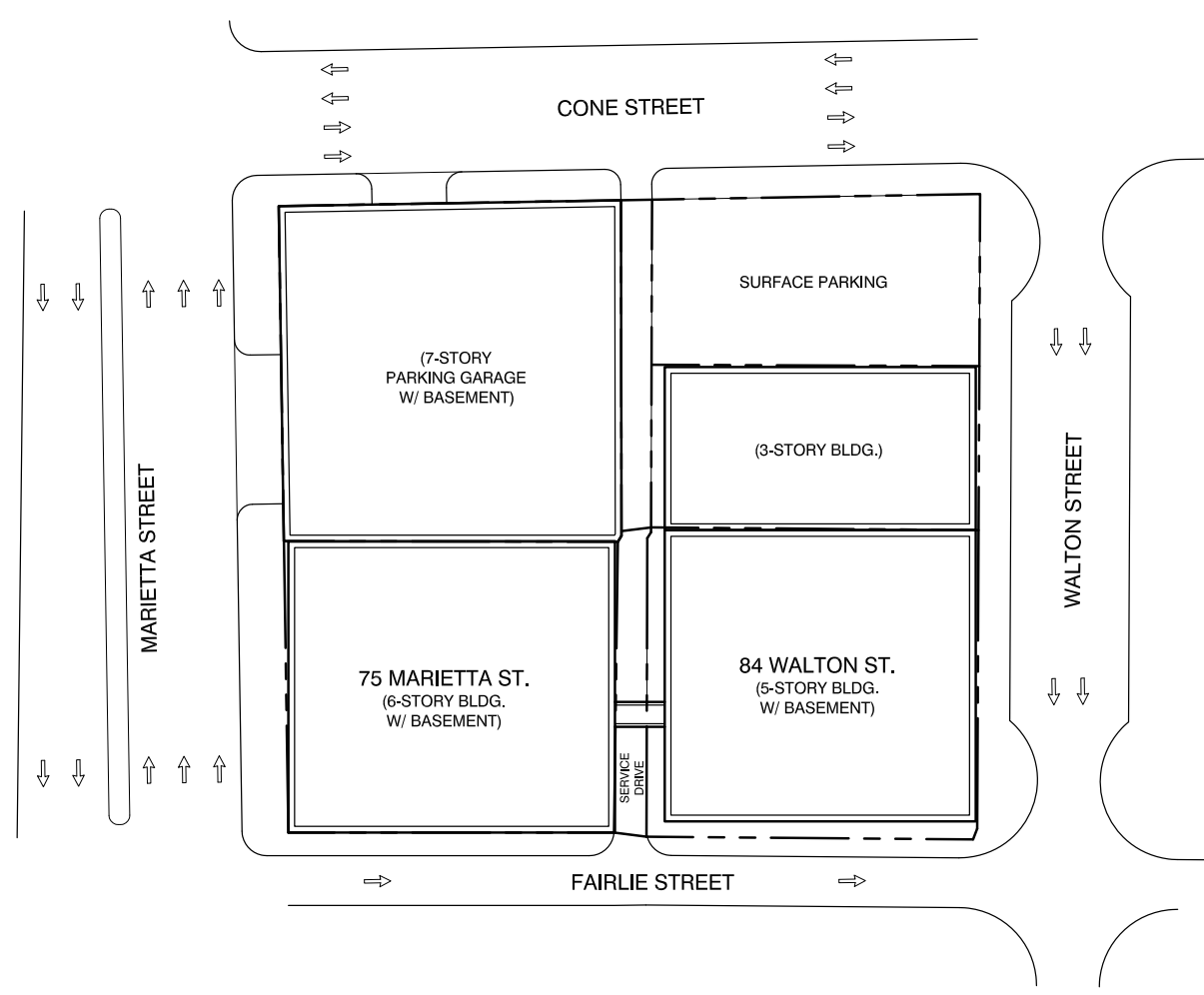
Jim Saine  
(404) 898 9010

[jsaine@seligenterprises.com](mailto:jsaine@seligenterprises.com)



EXCEPT WITH RESPECT TO THE OBLIGATIONS OF LANDLORD WHICH ARE EXPRESSLY PROVIDED IN THE LEASE, LANDLORD HAS MADE NO AGREEMENT, REPRESENTATION OR WARRANTY WITH RESPECT TO THE STATUS OR EXISTENCE OF ANY LEASE, OCCUPANCY OR USAGE OF ANY SPACE, OR THE EXISTENCE, DESIGN OR LOCATION OF ANY BUILDINGS, IMPROVEMENTS, PARKING AREAS, CURB CUTS, DRIVES OR OTHER COMMON AREAS WITH RESPECT TO THE SHOPPING CENTER OR ANY OUTPARCELS OR OTHER PROPERTY. LANDLORD RELIES ON THE INFORMATION CONTAINED WITHIN THIS DRAWING IS PRESUMED TO BE CORRECT, BUT LANDLORD MAKES NO WARRANTY, REPRESENTATION OR GUARANTEE AS TO ITS ACCURACY OR WHETHER IT WILL REMAIN AS CONFIGURED, AND LANDLORD RECOMMENDS THAT ALL INFORMATION BE FIELD VERIFIED PRIOR TO DESIGN AND CONSTRUCTION.

**ZONING: SPI-1 SP7**



### 75 MARIETTA ST. & 84 WALTON ST: LEASING PLAN

75 MARIETTA ST. & 84 WALTON ST.  
ATLANTA, GA. 30303

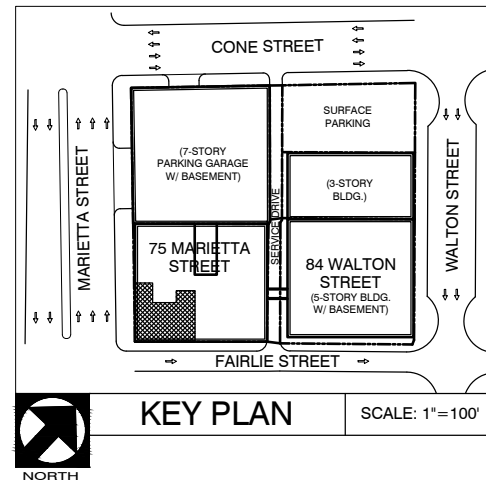
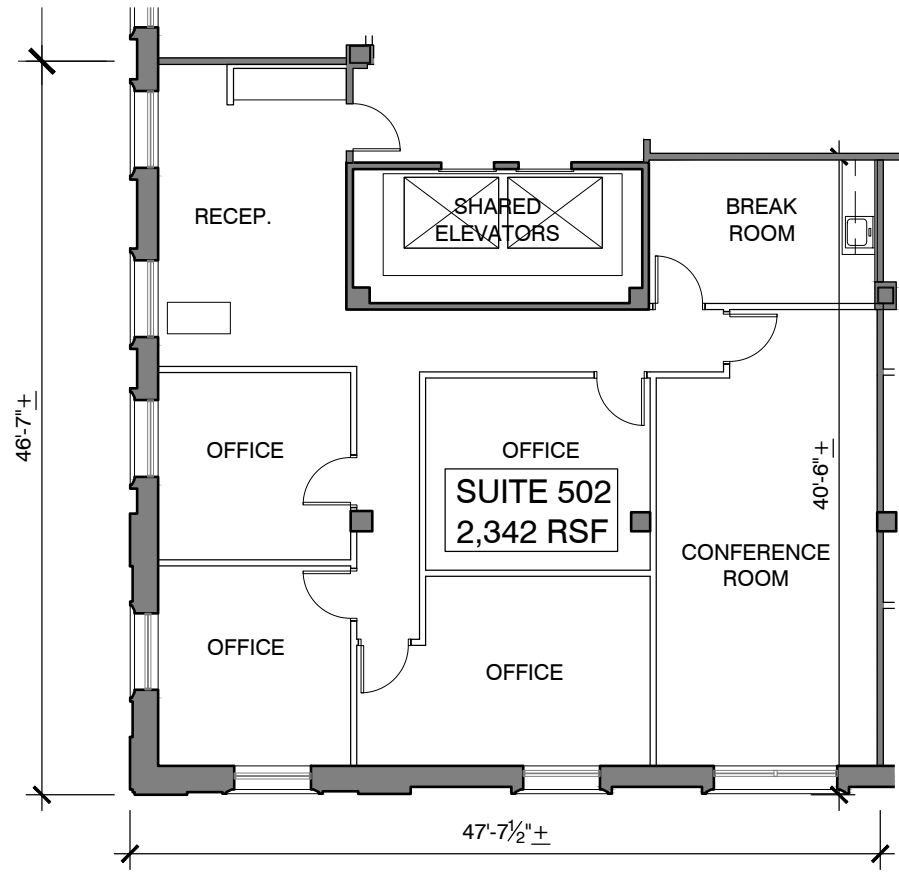
SCALE: 1"=40'  
DATE: 04/16/12

DRAWN BY: CO



1100 SPRING STREET NW SUITE 550  
ATLANTA, GEORGIA 30309-2848  
TEL (404) 876-5511 FAX (404) 876-2629

EXCEPT WITH RESPECT TO THE OBLIGATIONS OF LANDLORD WHICH ARE EXPRESSLY PROVIDED IN THE LEASE, LANDLORD HAS MADE NO AGREEMENT, REPRESENTATION OR WARRANTY WITH RESPECT TO THE STATUS OR EXISTENCE OF ANY LEASE, OCCUPANCY OR USAGE OF ANY SPACE, OR THE EXISTENCE, DESIGN OR LOCATION OF ANY BUILDING, IMPROVEMENTS, PARKING AREAS, CURB CUTS, DRIVEWAYS OR OTHER COMMON AREAS WITH RESPECT TO THE SHOPPING CENTER OR ANY OUTPARCELS OR OTHER PROPERTY. LANDLORD BELIEVES THAT THE INFORMATION CONTAINED WITHIN THIS DRAWING IS PRESENTLY CORRECT, BUT LANDLORD MAKES NO WARRANTY, REPRESENTATION OR GUARANTEE AS TO ITS ACCURACY OR WHETHER IT WILL REMAIN AS CONFIGURED, AND LANDLORD RECOMMENDS THAT ALL INFORMATION BE FIELD VERIFIED PRIOR TO DESIGN AND CONSTRUCTION.



# 75 MARIETTA STREET - FIFTH FLOOR PLAN - SUITE 502

75 MARIETTA STREET, SUITE 502  
ATLANTA, GEORGIA 30303



DRAWN BY: CO/KA DATE: 03/04/21

**SELIG**  
ENTERPRISES, INC.

1100 SPRING STREET NW SUITE 550  
ATLANTA, GEORGIA 30309-2848  
TEL (404) 876-5511 FAX (404) 875-2629

LWFJ.com/atl - Mar 04, 2021 - 8:40am  
 C:\GIS\PROJECTS\75 MARIETTA ST\Drawings\OFFICE\502 - Floor Plans\502 Main - Floor Plan.dwg

75 MARIETTA &  
84 WALTON PLACE  
ATLANTA, GA 30318

