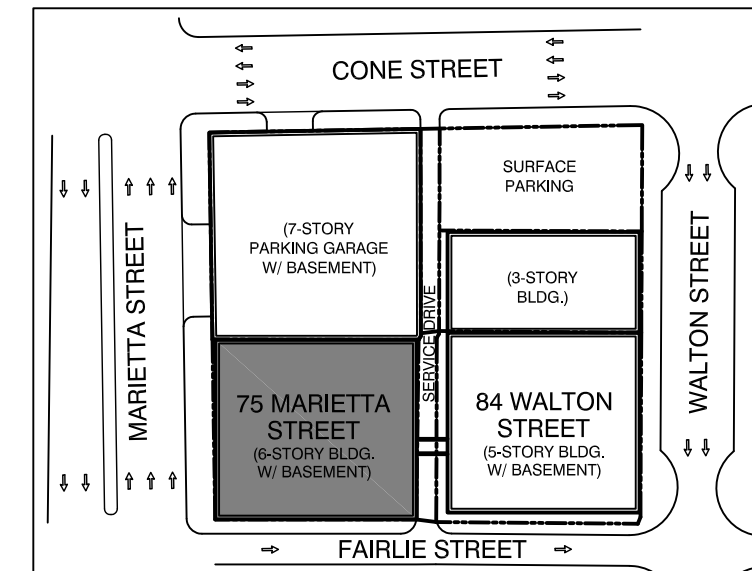
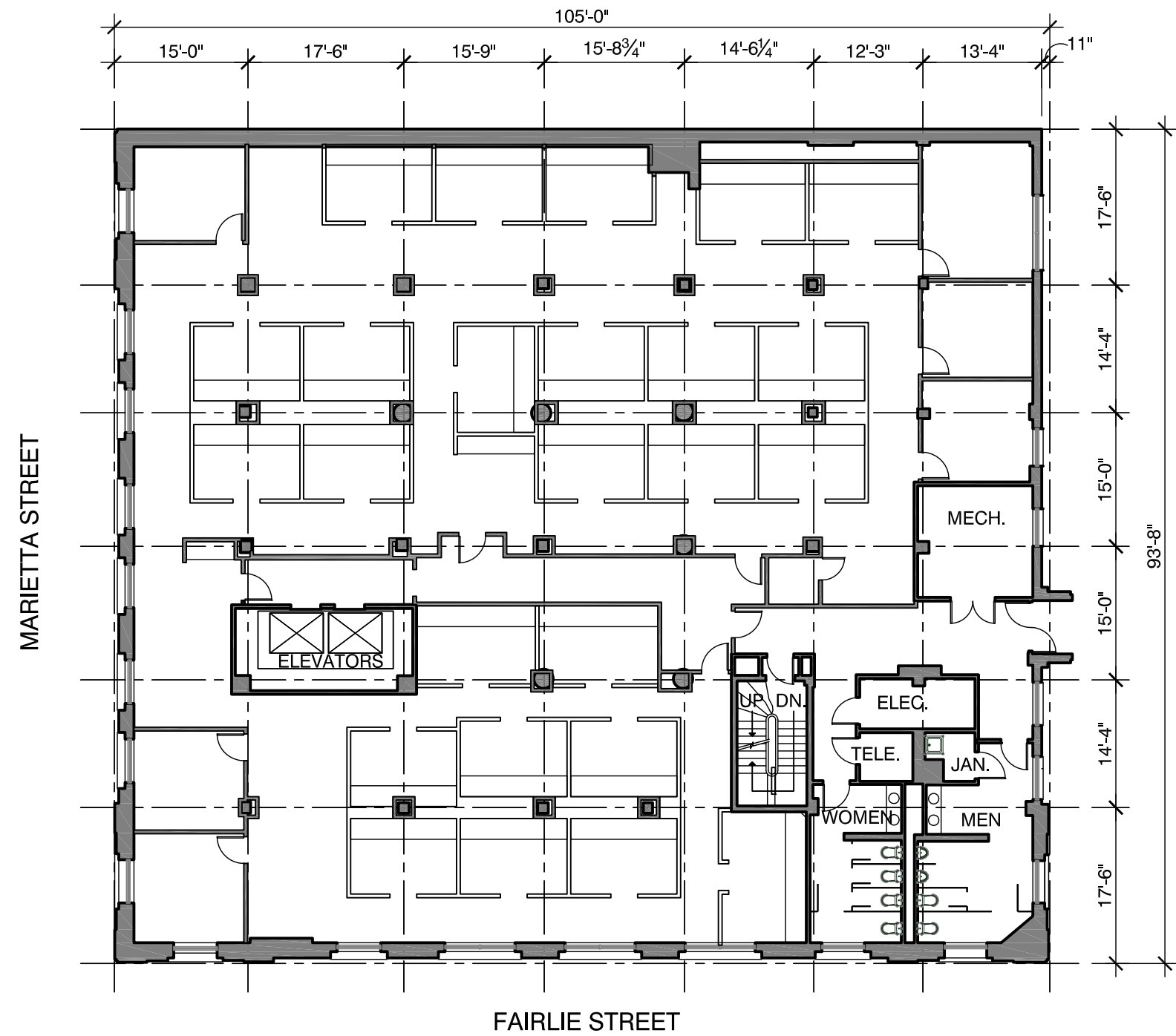


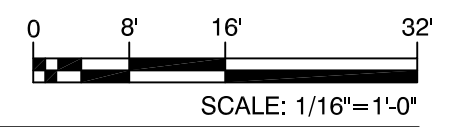
EXCEPT WITH RESPECT TO THE OBLIGATIONS OF LANDLORD WHICH ARE EXPRESSLY PROVIDED IN THE LEASE, LANDLORD HAS MADE NO AGREEMENT, REPRESENTATION OR WARRANTY WITH RESPECT TO THE STATUS OR EXISTENCE OF ANY LEASE, OCCUPANCY OR USAGE OF ANY SPACE, OR THE EXISTENCE, DESIGN OR LOCATION OF ANY BUILDINGS, IMPROVEMENTS, PARKING AREAS, CURB CUTS, DRIVES OR OTHER COMMON AREAS WITH RESPECT TO THE SHOPPING CENTER OR ANY OUTPARCELS OR OTHER PROPERTY. LANDLORD BELIEVES THAT THE INFORMATION CONTAINED WITHIN THIS DRAWING IS PRESENTLY CORRECT, BUT LANDLORD MAKES NO WARRANTY, REPRESENTATION OR GUARANTEE AS TO ITS ACCURACY OR WHETHER IT WILL REMAIN AS CONFIGURED, AND LANDLORD RECOMMENDS THAT ALL INFORMATION BE FIELD VERIFIED PRIOR TO DESIGN AND CONSTRUCTION.



KEY PLAN SCALE: 1"=100'

NORTH

3RD FLOOR RENTABLE AREA CALCULATION:
 8,119 SF FLOOR USEABLE AREA
 + 1,668 SF OF FLOOR COMMON AREA
9,787 SF RENTABLE AREA



75 MARIETTA STREET - THIRD FLOOR PLAN

75 MARIETTA STREET
 ATLANTA, GA. 30303

DRAWN BY: CO DATE: 12/17/13

SELIG ENTERPRISES, INC. 1100 SPRING STREET NW SUITE 550
 ATLANTA, GEORGIA 30309-2848
 TEL (404) 876-5511 FAX (404) 875-2629

USER: c:\na\17_2013_12\24am S:\CONSTRUCTION\AutoCAD\As_Built Drawings\OFFICE\75 Marietta Street\LODs\75 Marietta - Floor Plans - Floor 3.dwg
 12/17/13 10:24am