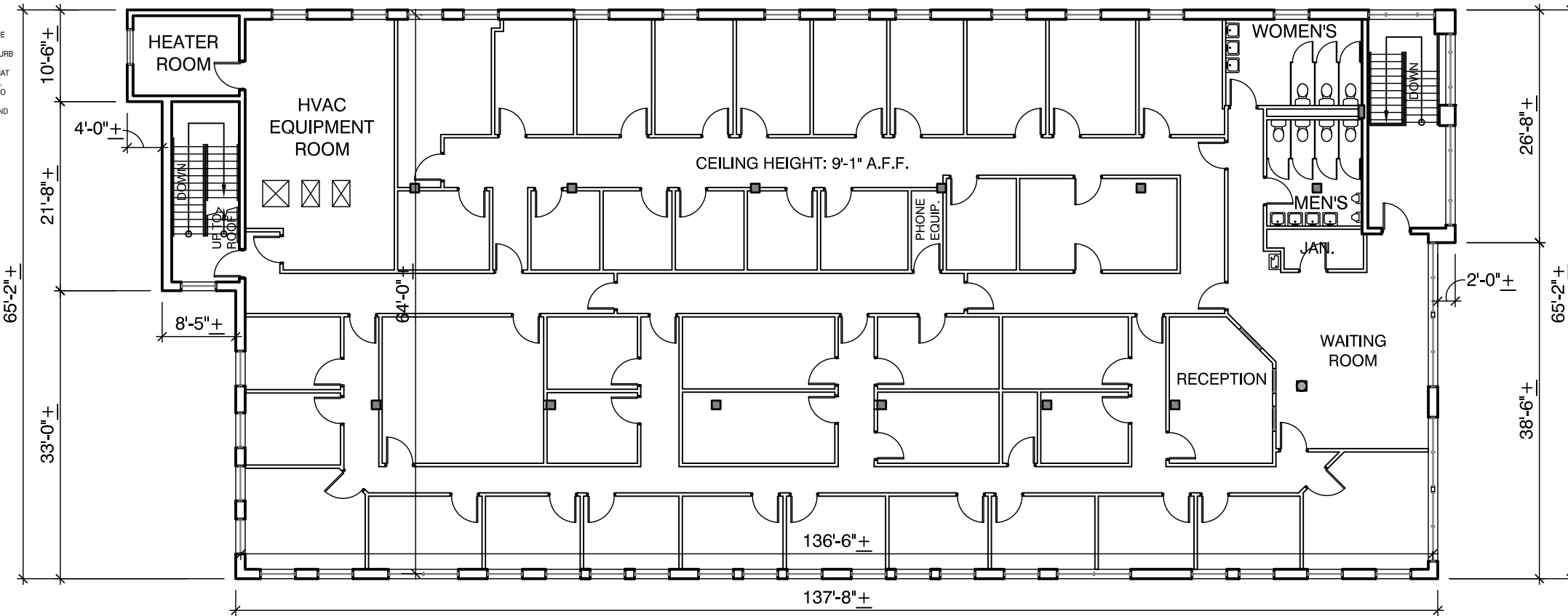
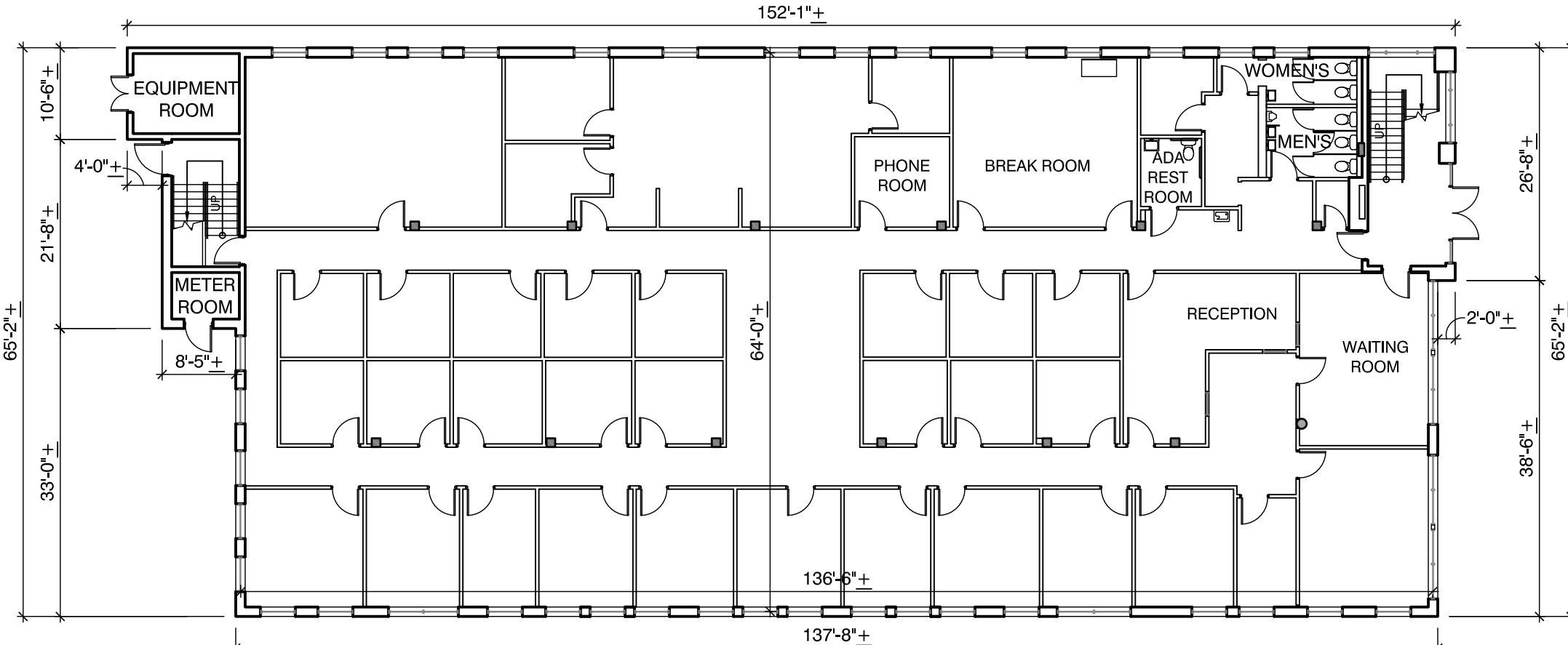


EXCEPT WITH RESPECT TO THE OBLIGATIONS OF LANDLORD WHICH ARE EXPRESSLY PROVIDED IN THE LEASE, LANDLORD HAS MADE NO AGREEMENT, REPRESENTATION OR WARRANTY WITH RESPECT TO THE STATUS OR EXISTENCE OF ANY LEASE, OCCUPANCY OR USAGE OF ANY SPACE, OR THE EXISTENCE, DESIGN OR LOCATION OF ANY BUILDINGS, IMPROVEMENTS, PARKING AREAS, CURB CUTS, DRIVES OR OTHER COMMON AREAS WITH RESPECT TO THE SHOPPING CENTER OR ANY OUTPARCELS OR OTHER PROPERTY. LANDLORD BELIEVES THAT THE INFORMATION CONTAINED WITHIN THIS DRAWING IS PRESENTLY CORRECT, BUT LANDLORD MAKES NO WARRANTY, REPRESENTATION OR GUARANTEE AS TO ITS ACCURACY OR WHETHER IT WILL REMAIN AS CONFIGURED, AND LANDLORD RECOMMENDS THAT ALL INFORMATION BE FIELD VERIFIED PRIOR TO DESIGN AND CONSTRUCTION.



**SECOND FLOOR**  
8,712 RSF



**FIRST FLOOR**  
8,843 RSF

547 CHURCH STREET AREA	
8,843 RSF FIRST FLOOR	
+ 8,712 RSF SECOND FLOOR	
<b>17,555 RSF TOTAL</b>	



SCALE: 1/16" = 1'-0"

**547 CHURCH STREET - FLOOR PLANS**

547 CHURCH STREET  
DECATUR, GEORGIA 30030

DRAWN BY: CO DATE: 11/08/17

1100 SPRING STREET NW SUITE 550  
ATLANTA, GEORGIA 30309-2848  
TEL (404) 876-5511 FAX (404) 875-2629

USER: csmell - Nov 08, 2017 - 3:38pm  
S:\CONSTRUCTION\AutoCAD\As-Built Drawings\Industrial\Church Street\LODs\547 Church Street.dwg