



5158 KENNEDY ROAD

FOREST PARK, GA 30297

SUITE E1
17,277 SF

Conveniently located in Northeast Atlanta, these spaces offer excellent access to I-85 and I-285 as well as great street front visibility. Spaces range from 3,386 SF to 6,654 SF and are well-suited for showroom or office use.

**EXCLUSIVELY
 MARKETED BY:**

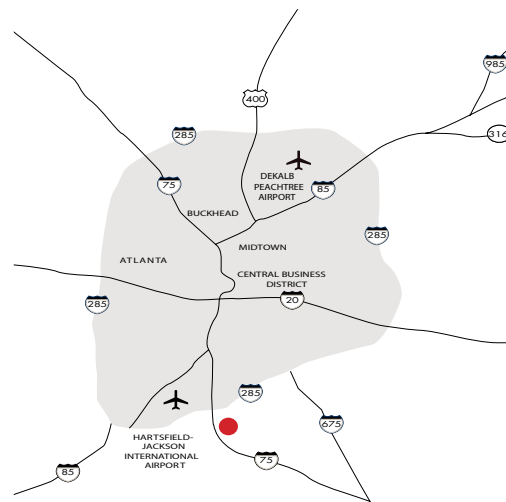
Kent Walker
 (404) 898 9032

kwalker@seligenterprises.com



All measures, facts, and figures are subject to verification.

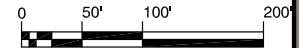
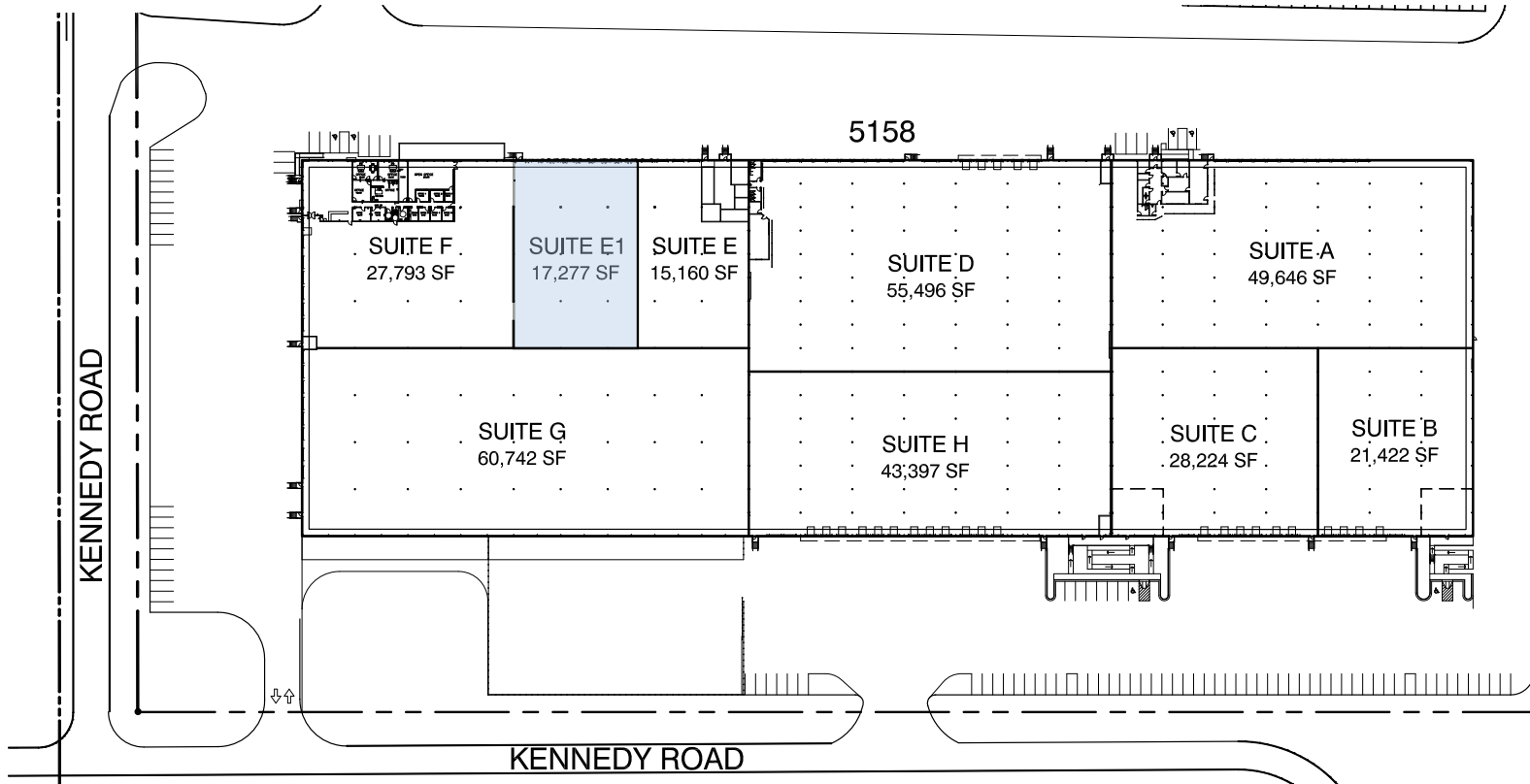
| TOTAL SF | OFFICE SF | CLEAR HEIGHT | DOCK DOORS | ZONING | SPRINKLER | ELECTRICAL | ACCESSIBILITY | AVAILALBLE |
|----------|-----------|--------------|---------------|--------|-----------|------------|---------------|------------|
| 17,277 | TBD | TBD | (9) dock-high | HI | YES | TBD | BY APPT | JUNE-17 |



EXCEPT WITH RESPECT TO THE OBLIGATIONS OF LANDLORD WHICH ARE EXPRESSLY PROVIDED IN THE LEASE, LANDLORD HAS MADE NO AGREEMENT, REPRESENTATION OR WARRANTY WITH RESPECT TO THE STATUS OR EXISTENCE OF ANY LEASE, OCCUPANCY OR USAGE OF ANY SPACE, OR THE EXISTENCE, LOCATION OR LOCATION OF ANY BUILDINGS, IMPROVEMENTS, PARKING AREAS, CURBSIDES, DRIVEWAYS OR OTHER COMMON AREAS WITH RESPECT TO THE SHOPPING CENTER OR ANY OUTPARCELS OR OTHER PROPERTY. LANDLORD BELIEVES THAT THE INFORMATION CONTAINED WITHIN THESE DRAWINGS IS PRESENTLY CORRECT, BUT LANDLORD MAKES NO WARRANTY, REPRESENTATION OR GUARANTEE AS TO THE ACCURACY OR WHETHER IT WILL REMAIN AS CONFIGURED, AND LANDLORD RECOMMENDS THAT ALL INFORMATION BE FIELD VERIFIED PRIOR TO DESIGN AND CONSTRUCTION.

MINIMUM NUMBER OF PARKING SPACES PER ZONING ORDINANCE - WAREHOUSES & WHOLESALE ESTABLISHMENTS & RELATED ACCESSORY OFFICES: FIVE PLUS ONE FOR EVERY EMPLOYEE IN THE LARGEST WORKING SHIFT, OR FIVE PLUS ONE FOR EVERY 1,700 SF OF USABLE FLOOR SPACE, WHICHEVER IS GREATER.

318,823 SF TOTAL
88 PARKING SPACES
PARKING RATIO: 0.27 SP/1,000 SF



SCALE: 1"=100'

DATE: 02/26/15



NORTH

5158 KENNEDY ROAD: LEASING PLAN

5158 KENNEDY RD.
FOREST PARK, GA. 30297

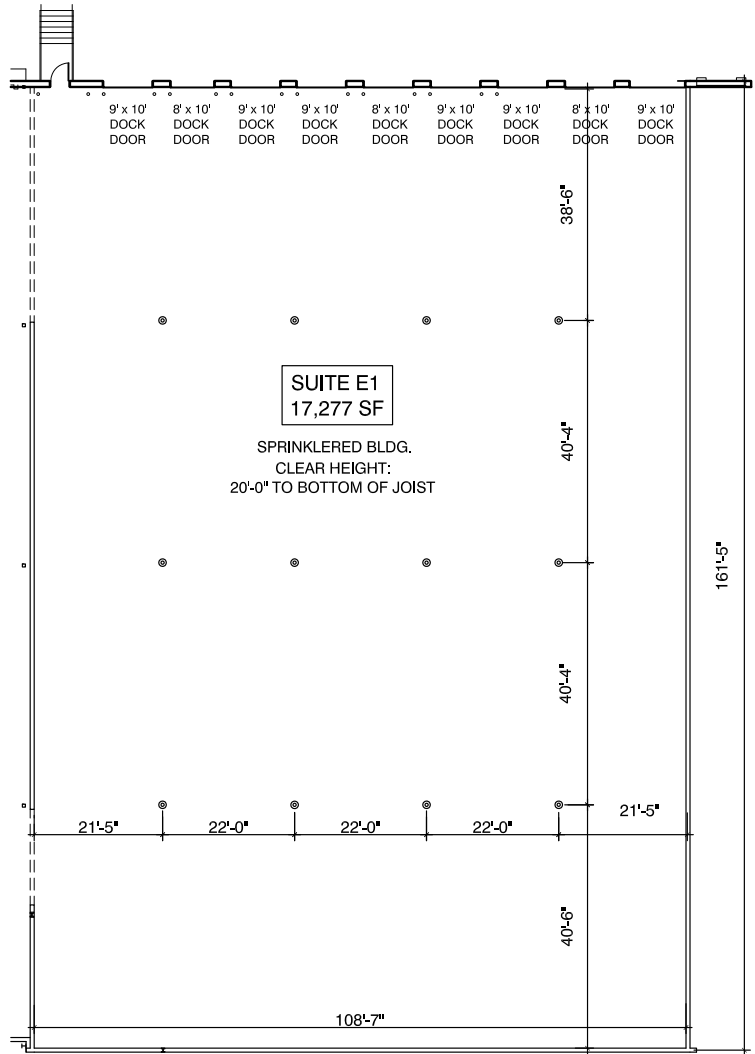
DRAWN BY: CO/KA



1100 SPRING STREET NW SUITE 550
ATLANTA, GEORGIA 30309-2848
TEL (404) 876-5511 FAX (404) 875-2629

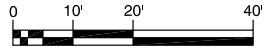
5/15/2015 10:58:59 AM C:\Users\jcooper\Documents\5158 Kennedy Road\5158 Kennedy Road.dwg & PLOT LEASING PLAN.dwg

EXCEPT WITH RESPECT TO THE OBLIGATIONS OF LANDLORD WHICH ARE EXPRESSLY PROVIDED IN THE LEASE, LANDLORD HAS MADE NO AGREEMENT, REPRESENTATION OR WARRANTY WITH RESPECT TO THE STATUS OR EXISTENCE OF ANY LEASE, OCCUPANCY OR USAGE OF ANY SPACE, OR THE EXISTENCE, DESIGN OR LOCATION OF ANY BUILDING IMPROVEMENTS, PARKING AREAS, CURB CUTS, DRIVEWAYS OR OTHER COMMON AREAS WITH RESPECT TO THE SHIPPING CENTER OR ANY OUTPARCELS OR OTHER PROPERTY. LANDLORD BELIEVES THAT THE INFORMATION CONTAINED WITHIN THIS DRAWING IS PRESENTLY CORRECT, BUT LANDLORD MAKES NO WARRANTY, REPRESENTATION OR GUARANTEE AS TO ITS ACCURACY OR WHETHER IT WILL REMAIN AS CONFIGURED, AND LANDLORD RECOMMENDS THAT ALL INFORMATION BE FIELD VERIFIED PRIOR TO DESIGN AND CONSTRUCTION.



5158 KENNEDY ROAD, SUITE E1 - FLOOR PLAN

5158 KENNEDY ROAD, SUITE E1
 FOREST PARK, GEORGIA 30297



SCALE: 1"=20'

DATE: 03/04/19

DRAWN BY: KA



1100 SPRING STREET NW SUITE 550
 ATLANTA, GEORGIA 30309-2848
 TEL (404) 876-5511 FAX (404) 875-2629

03/04/19 10:00 AM C:\Users\kayla\OneDrive\Documents\5158 Kennedy Road Suite E1.dwg (19/03/2019 10:00 AM)

5158 KENNEDY ROAD

FOREST PARK, GA 30297

