



3079 EAST SHADOWLAWN AVE

3079 E SHADOWLAWN AVE NE
ATLANTA, GEORGIA 30305

1,616 SF

- Charming 1920's Bungalow in the Heart of Buckhead
- Suitable Retail, Office, or Studio Space
- Excellent Visibility
- Lush Landscaping
- Zoning: SPI-9 Subarea 3: Extended Village District

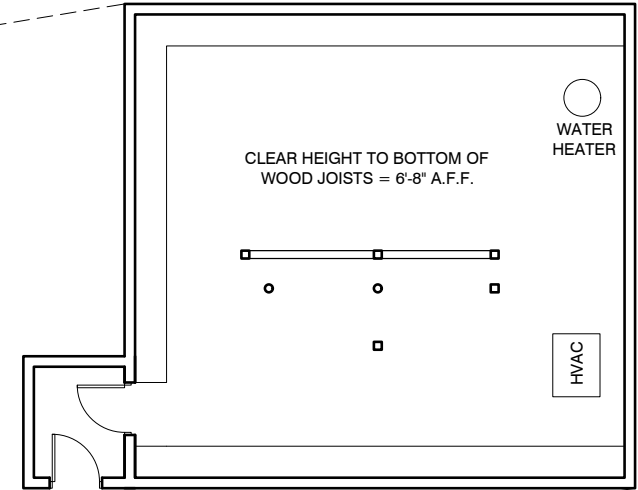
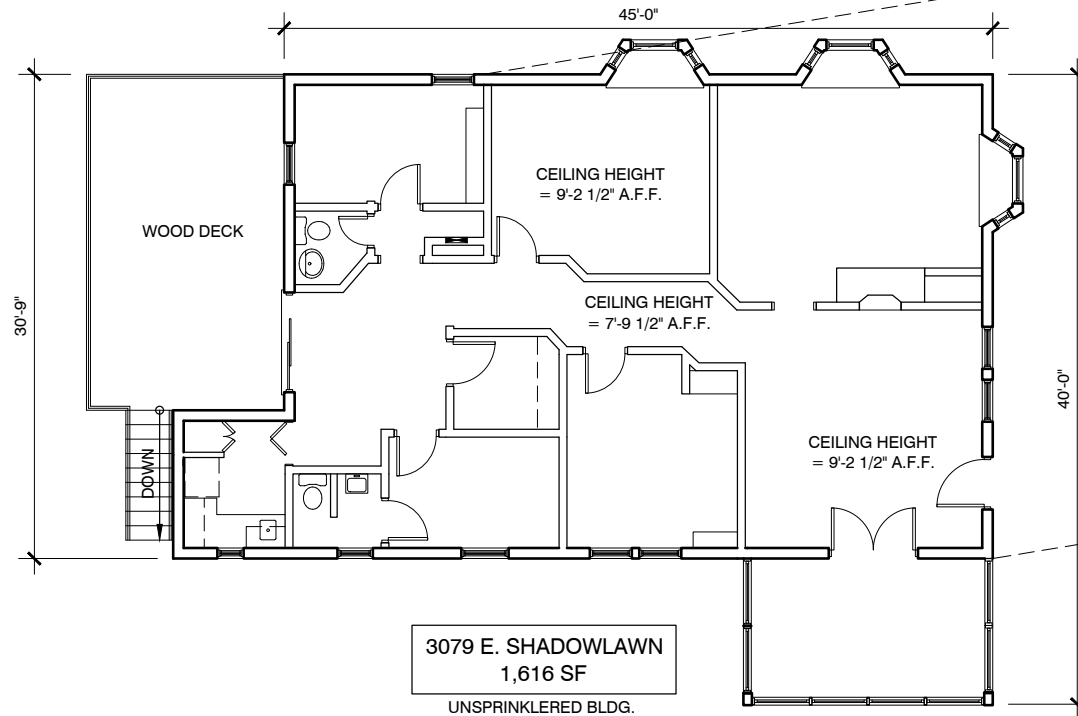
**EXCLUSIVELY
MARKETED BY:**

Shirley A. Gouffon
(404) 898 9012

sgouffon@seligenterprises.com



EXCEPT WITH RESPECT TO THE OBLIGATIONS OF LANDLORD WHICH ARE EXPRESSLY PROVIDED IN THE LEASE, LANDLORD HAS MADE NO AGREEMENT, REPRESENTATION OR WARRANTY WITH RESPECT TO THE STATUS OR EXISTENCE OF ANY LEASE, OCCUPANCY OR USAGE OF ANY SPACE, OR THE EXISTENCE, DESIGN OR LOCATION OF ANY BUILDINGS, IMPROVEMENTS, PARKING AREAS, CURB CUTS, DRIVES OR OTHER COMMON AREAS WITH RESPECT TO THE SHOPPING CENTER OR ANY OUTPARCELS OR OTHER PROPERTY. LANDLORD BELIEVES THAT THE INFORMATION CONTAINED WITHIN THIS DRAWING IS PRESENTLY CORRECT, BUT LANDLORD MAKES NO WARRANTY, REPRESENTATION OR GUARANTEE AS TO ITS ACCURACY OR WHETHER IT WILL REMAIN AS CONFIGURED, AND LANDLORD RECOMMENDS THAT ALL INFORMATION BE FIELD VERIFIED PRIOR TO DESIGN AND CONSTRUCTION.



EXTERIOR ENTRY
STORAGE
BASEMENT BELOW
UNSPRINKLERED BLDG.

3079 E. SHADOWLAWN
1,616 SF
UNSPRINKLERED BLDG.

3079 EAST SHADOWLAWN: FLOOR PLAN

3079 EAST SHADOWLAWN
ATLANTA, GA. 30305



SCALE: 1/8" = 1'-0"

DRAWN BY: CO

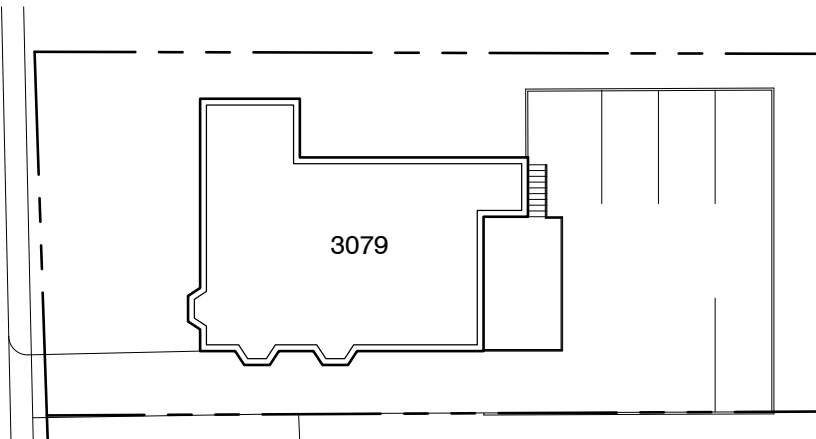
DATE: 03/23/21



1100 SPRING STREET NW SUITE 550
ATLANTA, GEORGIA 30309-2848
TEL (404) 876-5511 FAX (404) 875-2629

EXCEPT WITH RESPECT TO THE OBLIGATIONS OF LANDLORD WHICH ARE EXPRESSLY PROVIDED IN THE LEASE, LANDLORD HAS MADE NO AGREEMENT, REPRESENTATION OR WARRANTY WITH RESPECT TO THE STATUS OR EXISTENCE OF ANY LEASE, OCCUPANCY OR USAGE OF ANY SPACE, OR THE EXISTENCE, DESIGN OR LOCATION OF ANY BUILDINGS, IMPROVEMENTS, PARKING AREAS, CURB CUTS, DRIVES OR OTHER COMMON AREAS WITH RESPECT TO THE SHOPPING CENTER OR ANY OUTPARCELS OR OTHER PROPERTY. LANDLORD BELIEVES THAT THE INFORMATION CONTAINED WITHIN THIS DRAWING IS PRESENTLY CORRECT, BUT LANDLORD MAKES NO WARRANTY, REPRESENTATION OR GUARANTEE AS TO ITS ACCURACY OR WHETHER IT WILL REMAIN AS CONFIGURED, AND LANDLORD RECOMMENDS THAT ALL INFORMATION BE FIELD VERIFIED PRIOR TO DESIGN AND CONSTRUCTION.

EAST SHADOWLAWN AVE.



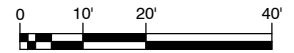
3079



NORTH

3079 EAST SHADOWLAWN AVE: LEASING PLAN

3079 EAST SHADOWLAWN AVE.
ATLANTA, GA. 30305



SCALE: 1" = 20'

DRAWN BY: CO

DATE: 03/24/21



1100 SPRING STREET NW SUITE 550
ATLANTA, GEORGIA 30309-2848
TEL (404) 876-5511 FAX (404) 875-2629



3079 EAST SHADOWLAWN AVE

3079 E SHADOWLAWN AVE NE
ATLANTA, GEORGIA 30305

1,616 SF

RENTAL RATES

Rental Rate PSF	\$28.00
Ancillary Charges*	\$4.47
Total Monthly Charges	\$4,372.66
* Taxes / Insurance (charges are approximate)	

**EXCLUSIVELY
MARKETED BY:**

Shirley A. Gouffon
(404) 898 9012

sgouffon@seligenterprises.com



3079 EAST SHADOWLAWN AVE

3079 E SHADOWLAWN AVE NE
ATLANTA, GEORGIA 30305

