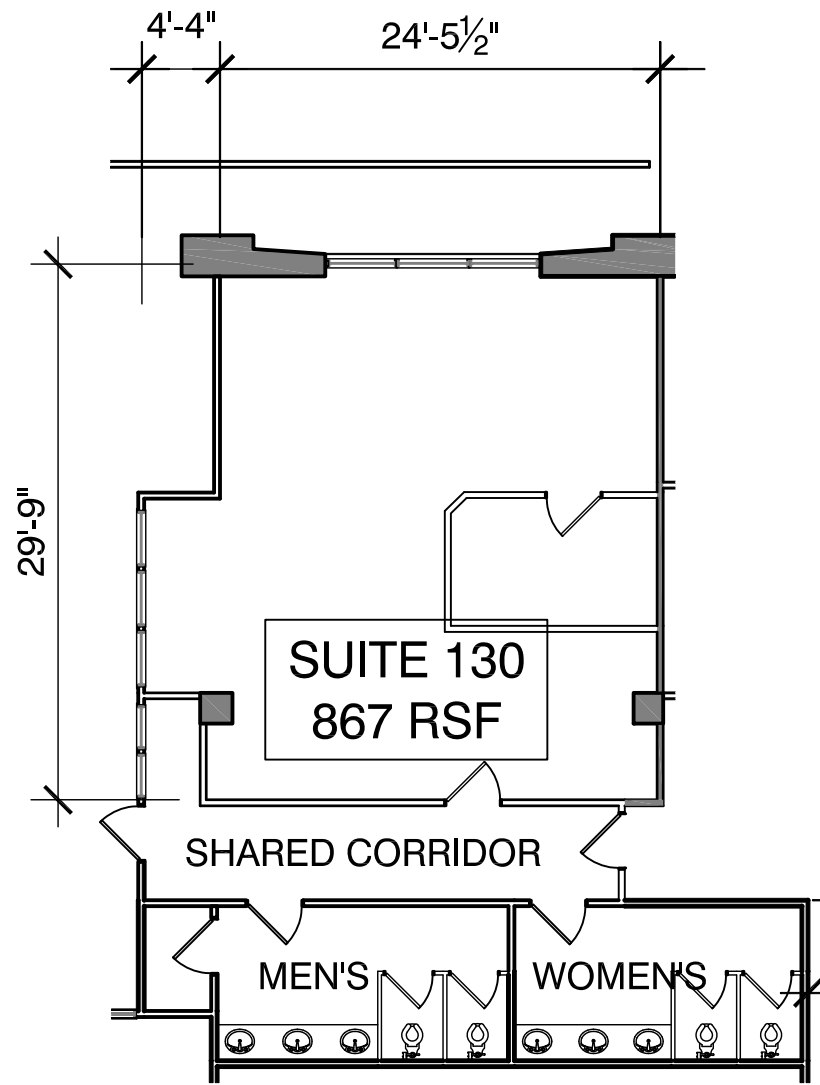


EXCEPT WITH RESPECT TO THE OBLIGATIONS OF LANDLORD WHICH ARE EXPRESSLY PROVIDED IN THE LEASE, LANDLORD HAS MADE NO AGREEMENT, REPRESENTATION OR WARRANTY WITH RESPECT TO THE STATUS OR EXISTENCE OF ANY LEASE, OCCUPANCY OR USAGE OF ANY SPACE, OR THE EXISTENCE, DESIGN OR LOCATION OF ANY BUILDINGS, IMPROVEMENTS, PARKING AREAS, CURB CUTS, DRIVES OR OTHER COMMON AREAS WITH RESPECT TO THE SHOPPING CENTER OR ANY OUTPARCELS OR OTHER PROPERTY. LANDLORD BELIEVES THAT THE INFORMATION CONTAINED WITHIN THIS DRAWING IS PRESENTLY CORRECT, BUT LANDLORD MAKES NO WARRANTY, REPRESENTATION OR GUARANTEE AS TO ITS ACCURACY OR WHETHER IT WILL REMAIN AS CONFIGURED, AND LANDLORD RECOMMENDS THAT ALL INFORMATION BE FIELD VERIFIED PRIOR TO DESIGN AND CONSTRUCTION.



270 CARPENTER DRIVE: SUITE 130 FLOOR PLAN

270 CARPENTER DRIVE, SUITE 130
SANDY SPRINGS, GEORGIA 30328

FULLY SPRINKLERED
SCALE: 3/32" = 1'-0"

DRAWN BY: CO

DATE: 08/13/15



1100 SPRING STREET NW SUITE 550
ATLANTA, GEORGIA 30309-2848
TEL (404) 876-5511 FAX (404) 875-2629

USER: conell - Mar 07, 2017 - 9:30am
S:\CONSTRUCTION\AIA\Cad\Ae_Built Drawings\OFFICE\270 Carpenter Drive\Drawings in Progress\270 Carpenter Drive\FLOOR PLANS proposed Suite 940_02-21-17.dwg