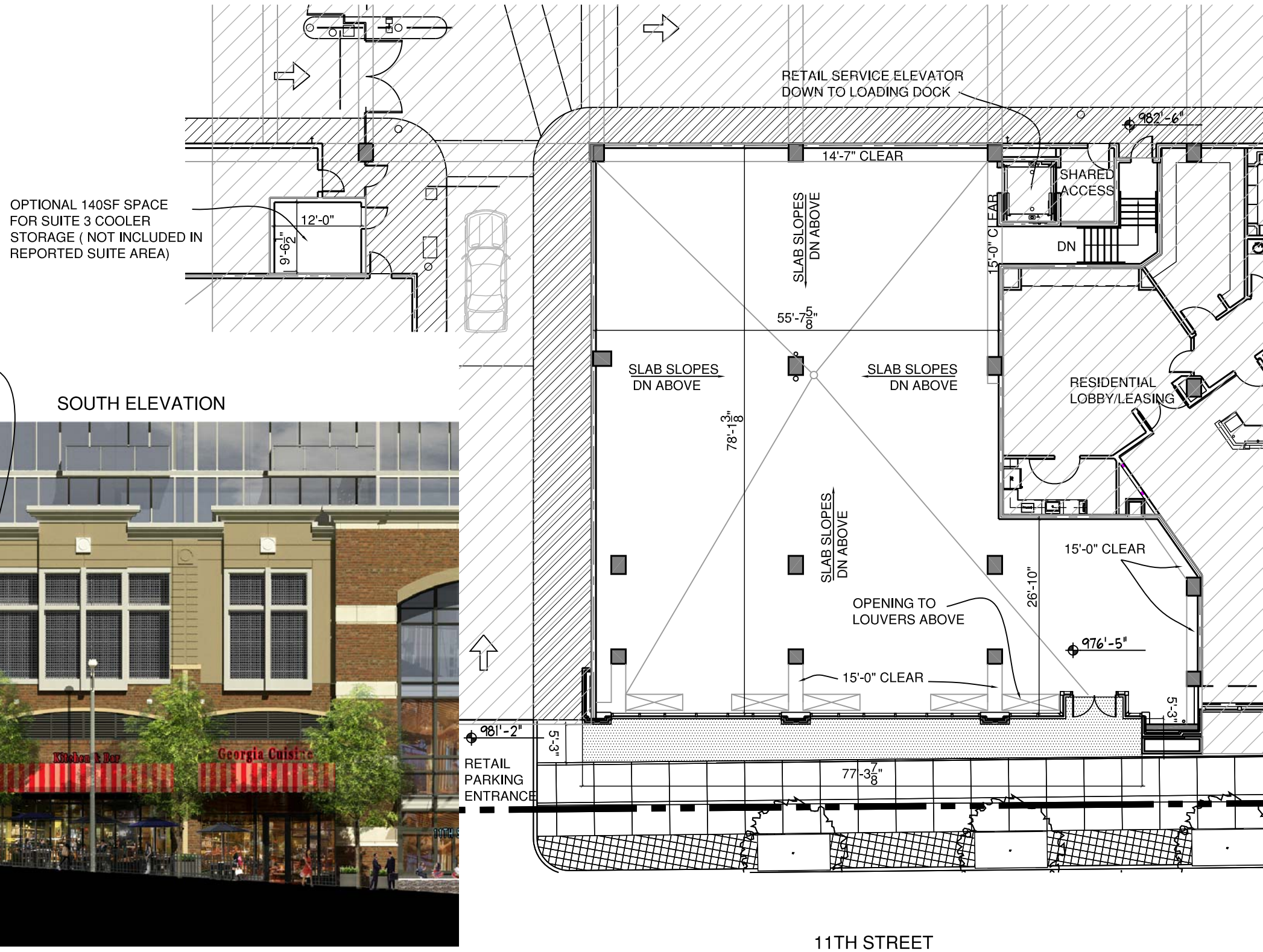


The information depicted by, described or contained in this document is preliminary and subject to change without notice.

THIS DRAWING IS THE PROPERTY OF RULE JOY TRAMMELL + RUBIO, LLC AND MAY NOT BE REPRODUCED WITHOUT WRITTEN CONSENT. © 2014



AWNINGS SHOWN ARE TO BE PROVIDED BY TENANT

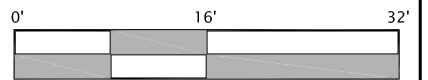
SOUTH ELEVATION



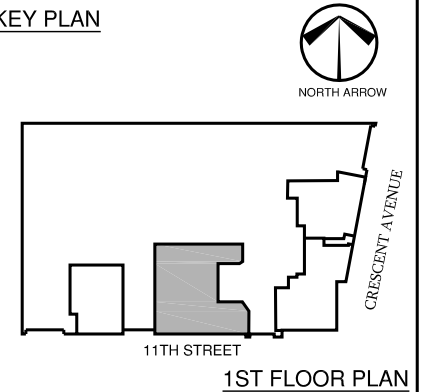
**LEGEND**

- SUPPLEMENTAL ZONE
- STRUCTURE ABOVE  
992'-4" TO 991'-10"  
(15'-11 TO 15'-5" CLEAR)  
UNLESS NOTED OTHERWISE

AREA	=	5,442 SF
SUPPLEMENTAL ZONE	=	452 SF
FINISH FLOOR	=	976'-5"
RETAIL PARKING	=	72 SPACES
TOTAL RETAIL SF: +/-		16,296 SF
RETAIL PARKING ON LEVEL 2 AND 3		
SERVICE AND LOADING ON LEVEL 1		



**KEY PLAN**



DATE:  
JULY 13, 2015

SPACE NO.:  
RETAIL SPACE  
NO. 3

**60 11th**  
Atlanta, Georgia



**EXHIBIT "E"**  
**PREMISES**  
**LEASE OUTLINE DRAWING**