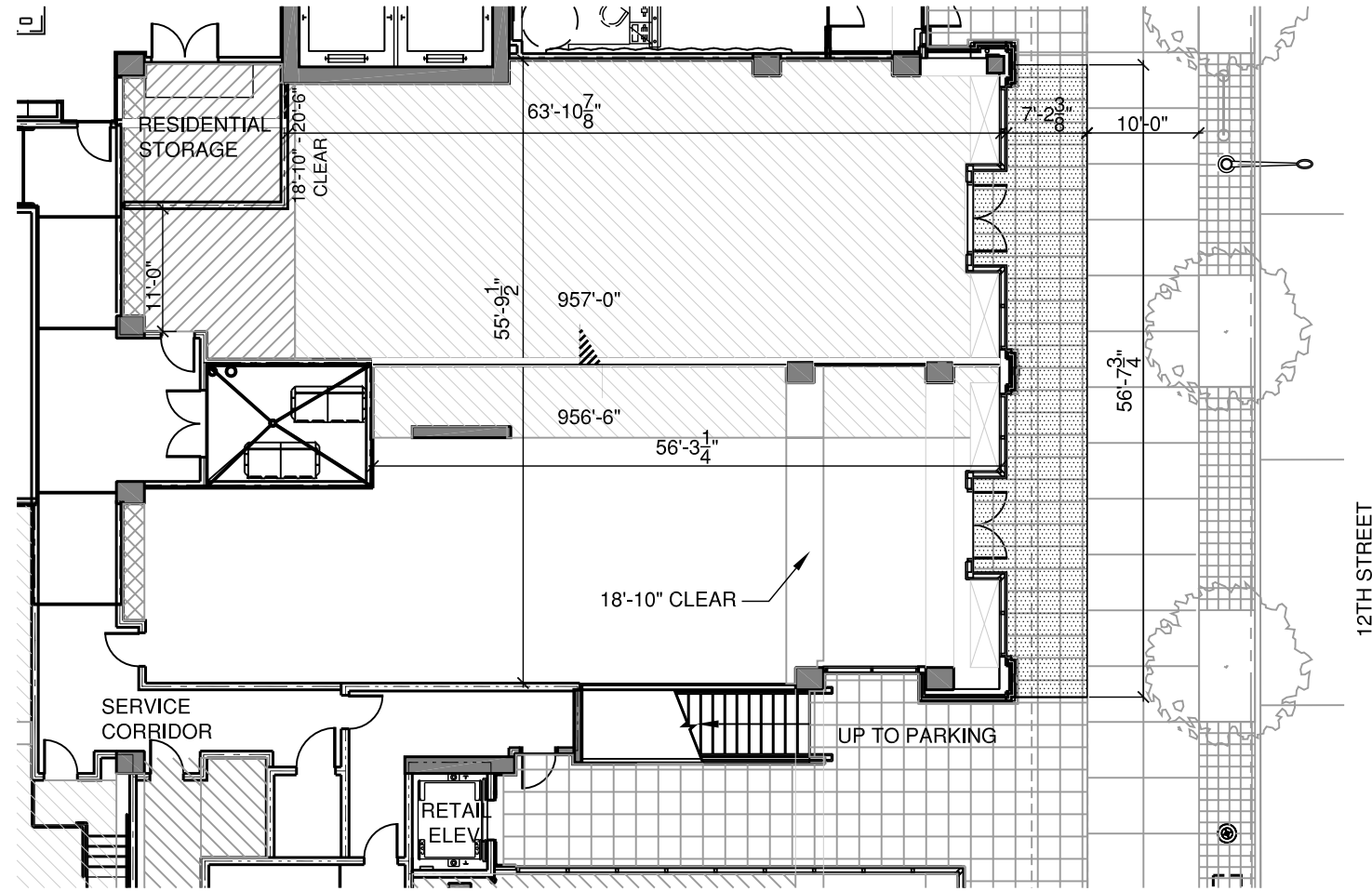


The information depicted by, described or contained in this document is preliminary and subject to change without notice.

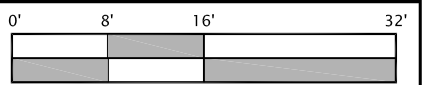
THIS DRAWING IS THE PROPERTY OF RULE JOY TRAMMELL + RUBIO, LLC AND MAY NOT BE REPRODUCED WITHOUT WRITTEN CONSENT. © 2011



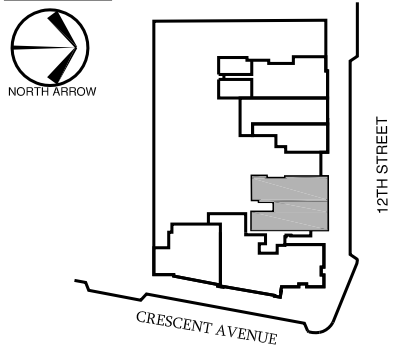
LEGEND

- SUPPLEMENTAL ZONE
- STRUCTURE ABOVE:
976'-3" (19'-9" CLEAR)
UNLESS NOTED OTHERWISE
- STRUCTURE ABOVE: VARIES
976'-3" - 976'-2"
(19'-9" TO 19'-8" CLEAR)
- STRUCTURE ABOVE:
974'-7"
(18'-1" CLEAR)

AREA	=	3,797 SF
SUPPLEMENTAL ZONE	=	452 SF
FINISH FLOOR	=	956'-6", 957'-0"
RETAIL PARKING	=	73 SPACES (3.14/1000)
TOTAL RETAIL SF: +/- 22,767 SF		
RETAIL PATRON PARKING ON LEVEL 2		
SERVICE AND LOADING ON LEVEL 1		



KEY PLAN



OPTIONAL
AWNINGS BY
TENANT



NORTH ELEVATION

DATE:
DEC. 09, 2013

SPACE NO.:
RETAIL SPACE
NO. 4 + 5

77 12th Street
Atlanta, Georgia



EXHIBIT "E"
PREMISES
LEASE OUTLINE DRAWING