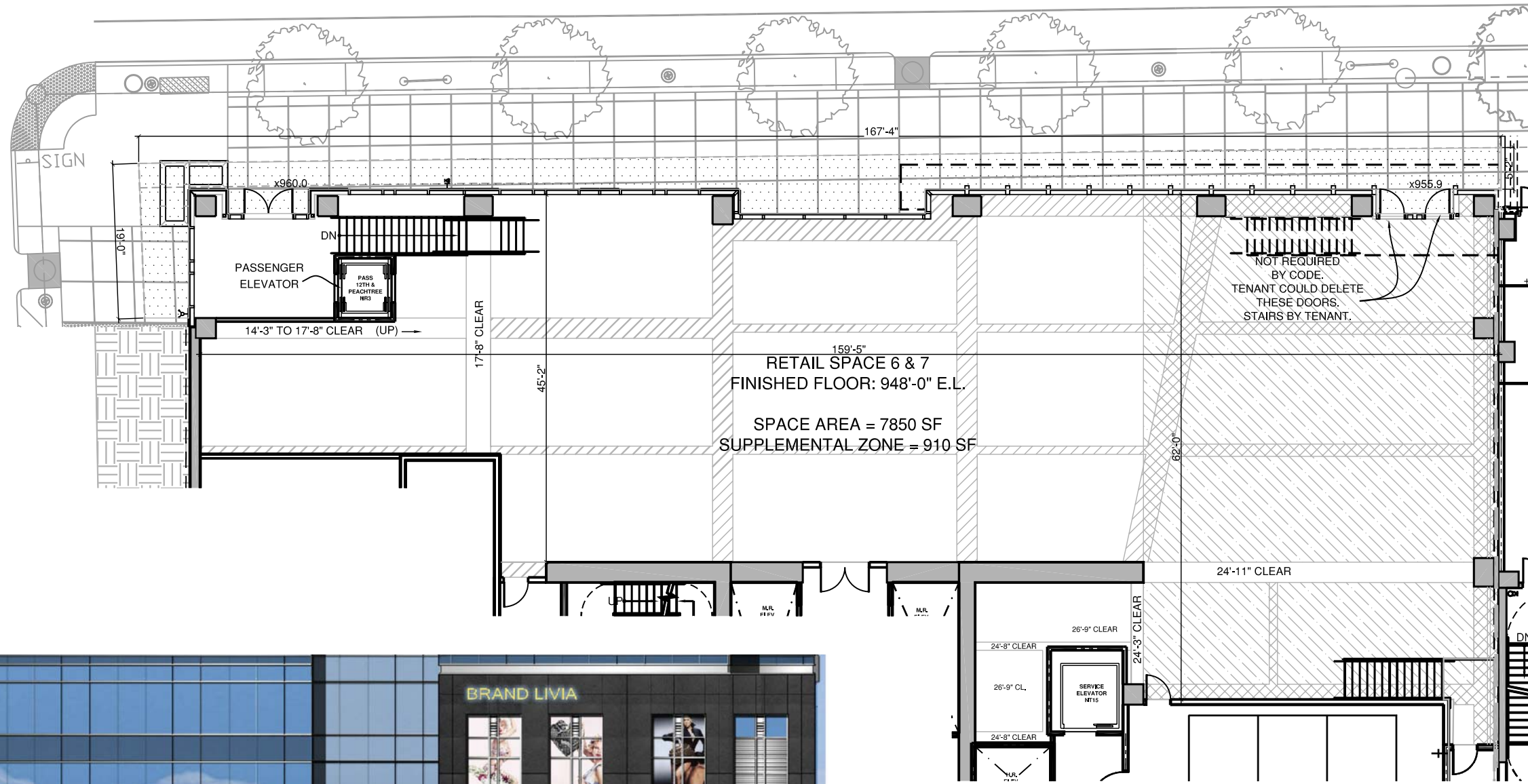


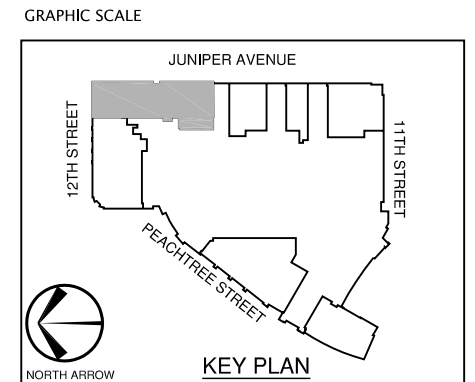
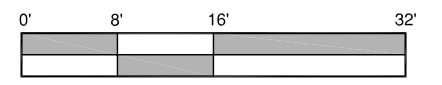
The information depicted by, described or contained in this document is preliminary and subject to change without notice.

THIS DRAWING IS THE PROPERTY OF RULE JOY TRAMMELL + RUBIO, LLC AND MAY NOT BE REPRODUCED WITHOUT WRITTEN CONSENT. © 2008



LEGEND	
	SUPPLEMENTAL ZONE
	VARIABLES FROM 15'-11" TO 26'-7" (RAMP ABOVE)
	STRUCTURE ABOVE: 27'-0" (24'-11" CLEAR) (RAMP ABOVE)
	VARIABLES FROM 14'-3" TO 24'-11"
	STRUCTURE ABOVE: 27'-0" 26'-7" CLEAR

AREA	=	7,850 SF
FINISH FLOOR	=	948'-0"
STRUCTURE ABOVE	=	965'-0", 975'-0" & 985'-0"
RETAIL PARKING DURING OFFICE BUSINESS HOURS = 163 SPACES (2.7/1000)		
RETAIL PARKING AFTER OFFICE BUSINESS HOURS = 1099 SPACES (18.3/1000)		
TOTAL RETAIL SF: +/- 60,000 SF		
RETAIL PATRON PARKING ON LEVELS 7 AND 9		
SERVICE AND LOADING ON LEVEL 5		
ACCESSIBILITY: TRANSITION REQUIRED		



## JUNIPER STREET LEVEL 5

DATE:  
SEPT. 18, 2009

SPACE NO.:  
RETAIL SPACE  
NO. 6 & 7

**1075 PEACHTREE**  
Atlanta, Georgia



**EXHIBIT "E"**  
**PREMISES**  
**LEASE OUTLINE DRAWING**