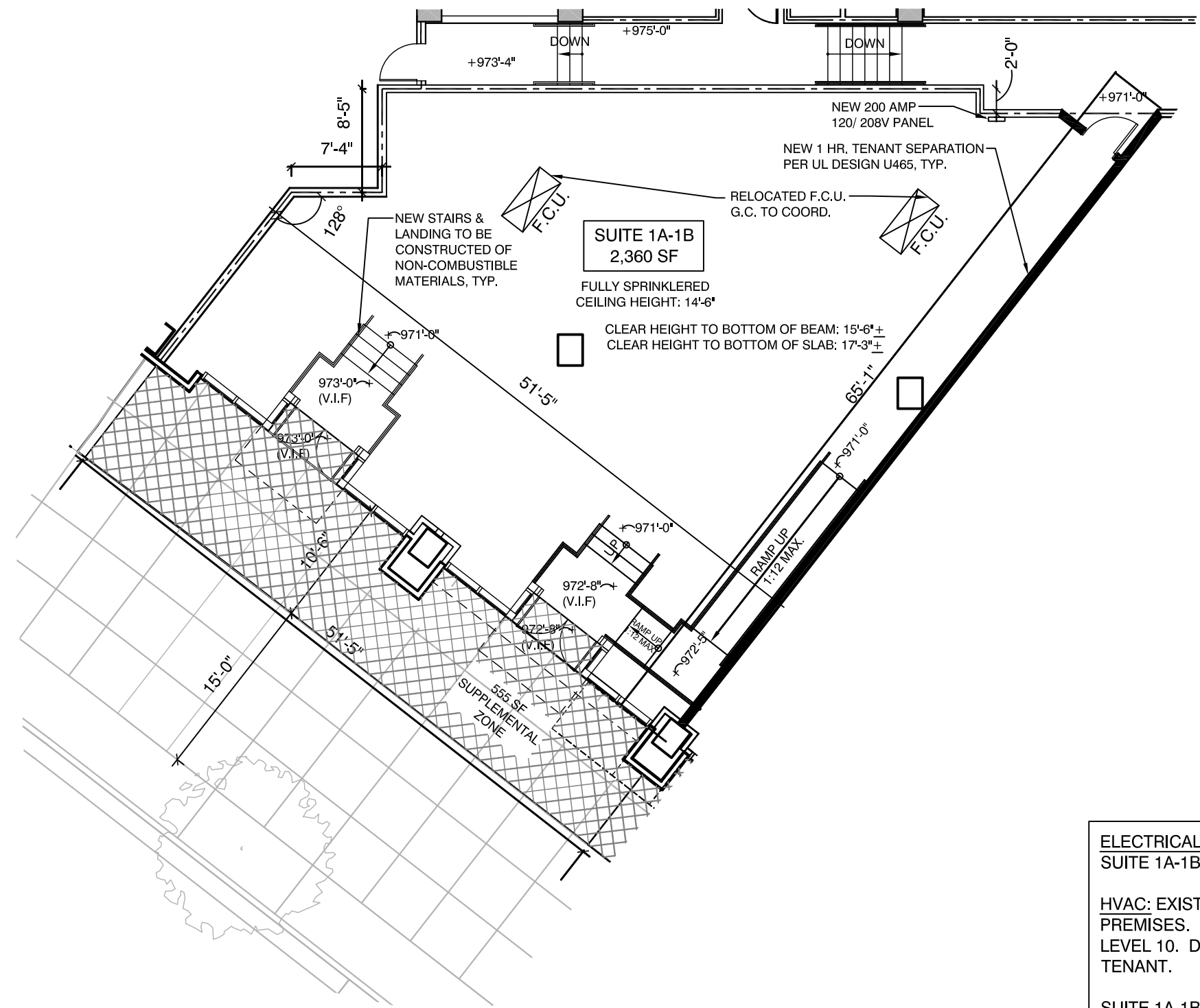


EXCEPT WITH RESPECT TO THE OBLIGATIONS OF LANDLORD WHICH ARE EXPRESSLY PROVIDED IN THE LEASE, LANDLORD HAS MADE NO AGREEMENT, REPRESENTATION OR WARRANTY WITH RESPECT TO THE STATUS OR EXISTENCE OF ANY LEASE, OCCUPANCY OR USAGE OF ANY SPACE, OR THE EXISTENCE, DESIGN OR LOCATION OF ANY BUILDINGS, IMPROVEMENTS, PARKING AREAS, CURB CUTS, DRIVES OR OTHER COMMON AREAS WITH RESPECT TO THE SHOPPING CENTER OR ANY OUTPARCELS OR OTHER PROPERTY. LANDLORD BELIEVES THAT THE INFORMATION CONTAINED WITHIN THIS DRAWING IS PRESENTLY CORRECT, BUT LANDLORD MAKES NO WARRANTY, REPRESENTATION OR GUARANTEE AS TO ITS ACCURACY OR WHETHER IT WILL REMAIN AS CONFIGURED, AND LANDLORD RECOMMENDS THAT ALL INFORMATION BE FIELD VERIFIED PRIOR TO DESIGN AND CONSTRUCTION.



ELECTRICAL:
 SUITE 1A-1B = NEW 200 AMP 120/208V PANEL

HVAC: EXISTING FAN COIL COIL UNITS IN REAR OF THE PREMISES. EXISTING CONDENSING UNITS ON ROOF LEVEL 10. DISTRIBUTION AND FINAL CONNECTIONS BY TENANT.

SUITE 1A-1B = (2) TWO 5 TON UNITS = 10 TONS TOTAL

1075 PEACHTREE STREET: SUITE 1A-1B - FLOOR PLAN

SCALE: 3/32" = 1'-0"

1075 PEACHTREE STREET, SUITE 1A-B
 ATLANTA, GEORGIA 30309

DRAWN BY: CO DATE: 10/14/16

1100 SPRING STREET NW SUITE 550
 ATLANTA, GEORGIA 30309-2848
 TEL (404) 876-5511 FAX (404) 875-2629

S:\CONSTRUCTION\AIA\AutoCAD\Bldg Drawings\Retail\1075 Drawings\Retail\1075 Suite 1A-1B & 1C & 1D LOD floor plan 10-14-16.dwg